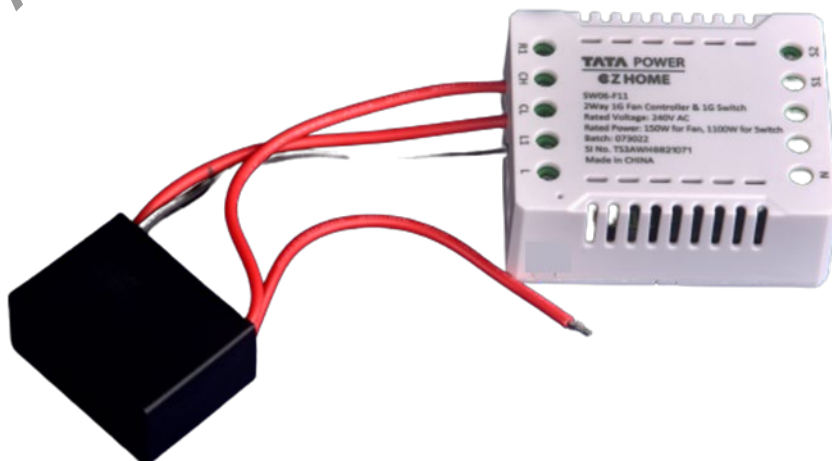


**2 Way 1G Fan Controller + 1G Smart Relay Switch****ITEM: SW06-F11****ITEM DESCRIPTION: 2 Way 1Gang Fan Controller + 1Gang Smart Relay Switch, SW06-F11, (In Built UART Wi-Fi Module GWF - KM26)****VERSION: V1.2****DATE: 2023-01-02****1. Product Instruction****1.1 Product Overview**

SW06-F11 is a 2 way combination of 1 channel Fan controller and 1 channel switch. The 1 channel Fan controller provides capacitor based 4 level speed control of Fan. Other channel switch can be used to Power ON/OFF a light or low power applications. The device is to be used in conjunction with exclusive APP, the compact design makes it suitable to be installed in a limited space, such as a wall mount switch box, an electrical control panel, etc. The device can be WiFi connected to an IOT server, allows user to power on or off and monitor power consumption of their lights or home appliances anytime and anywhere with an exclusive APP.

**1.2 Reference Picture**

SW06-F11 Converter appearance:



### 1.3 Product Function

---

- It can be installed in a wall mounted switch box to open/close lights or control fan loads at home.
- The 2 channel outputs can be controlled locally by 2 individual switches (conventional switch (S1) for Light and Doorbell switch (S2) for Fan) be independently or can be remotely and separately controlled through an App via Wi-Fi connection.
- Control home appliances from anywhere by APP with Wi-Fi access (Local and Remote).
- Also support switching of individual channel with Alexa & Google Home.
- Set schedule: Turn on/off your appliances/ set your fan at select speed based on specific time you set.
- Energy consumption monitoring: view the real-time power consumption or review the total electricity usage in a period of time.
- Multiple users control
- Overload feature
- Power On Switch status
- Control history view
- Support STA and AP work mode
- Support 2.4GHz Wi-Fi

## 2. User Guide

### 2.1 Pre requisites

---

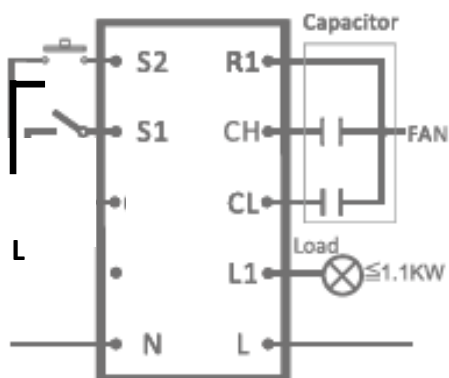
- The WiFi switch support local/remote control via 2.4GHz WiFi wireless technology, the device must be used in the environment where 2.4GHz WiFi network is available, and the user must know the WiFi network name (SSID) and corresponding password.  
Special Tips: the WiFi network switch connected generally does not need special adjustment, only in a few case, users may need to check working status of WiFi router: Connected devices number, WiFi signal status or the state of surrounding WiFi network.
- To connect the switch to WiFi router, users need to download and install corresponding APP and complete device pairing via APP.
- There is power limitation for load, please note that the max total output power is 150W for Fan and 1100W for switch.

### 2.2 Wiring mode

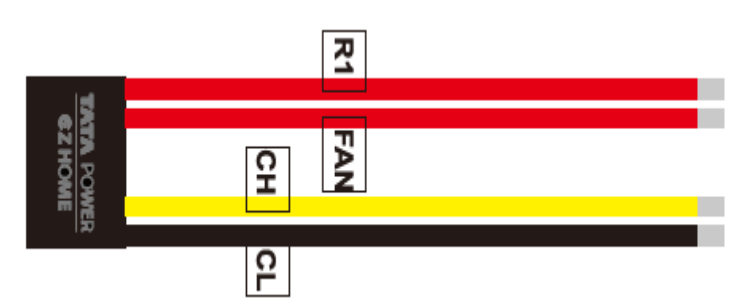
---

Note: Before wiring, please power off appliance first, cut off original power line, then wiring WiFi switch by referring to following figure.

The switch can be used to control 1 Fan and 1 ordinary switch as per user requirements, but user must use the device in line of the max power limitation.



SW06-F11 Unit



Capacitor (CBB61) Unit

### Wiring Description:

Special note: Once wiring is completed, please process APP configuration immediately(Add new device). In this process, the reset button would be applied to reset device to make device enter configurable state, so that we need to complete app configuration before locking the wall mounted switchbox.

Identity	I/O	Description
R1	Output	Connect to capacitor R1
CH	Output	Connect to capacitor CH(3.5uF)
CL	Output	Connect to capacitor CL(2.0uF)
FAN	Output	AC live line output, connect to fan power live line
L1	Output	Channel 1, AC live line output load
L	Input	AC live line input phase
N	Input	AC neutral line input
S1	Input	Mechanical switch input to turn on/off L1
S2	Input	Doorbell switch input to control fan

## 2.3 Parameters

### SW06-F11

Parameters	Details
ON/OFF control	2 WAY, 1 Channel Fan Controller + 1 Channel Smart Relay Switch
Application	Fan, lamp or other small home appliance
Wireless connection	WiFi 2.4 GHz
Rated voltage	240 VAC

Max total output power	150W for Fan, 1100W for Switch
WiFi range	30 meters indoor, 45 meters outdoors
APP support	Support Android 4.1 and iOS 8.0 or above
Dimension	62*49.5*22.5mm
Operating Temperature	-10°C ~ +50°C
Operating Humidity	20%~85%(No condensing)

## Capacitor

Parameters	Details
Capacitor Model	CBB61
Rated Voltage	250VAC 50Hz
Capacitor Combination	2+3.5μF ±5%

## 2.4 Speed Control of Fan

- 1) Switch ON & OFF the fan by long press of doorbell switch more than and equal to 2 secs. The fan turns ON with last speed status. In case the previous speed is at 0 position, the fan will be turned ON at speed 4.
- 2) Change the fan speed by short press (less than 2 secs) of the doorbell switch and fan speed will follow speed as 1-2-3-4-0-1-2-3-4-0-1..cycle steps.

## 3. Configuration Preparation

### 3.1 APP Download

The APP is compatible with Android 4.1 and iOS 8.0 or above system. iOS users could search the APP in App Store. Android users could search the APP in Google Play.

APP English name: "TATA Power EZ Home"

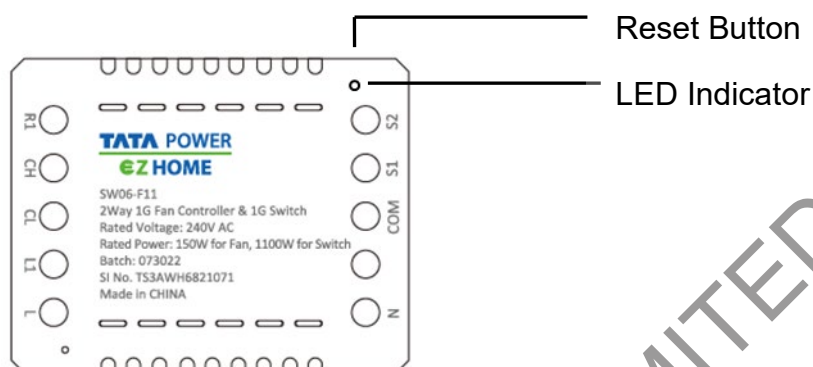


Tata Power EZ HOME

(QR code TATA Power EZ Home for both Play Store & App Store)

### 3.2 Factory Reset (enter Configurable status)

“Factory Reset” is an important step in APP configuration (Add new device), which make device enter configurable state.



Two ways to reset:

The first way: **for the first APP configuration, we suggest to reset device by this way:** long press the reset button for 5 seconds until the LED indicator flashes quickly.

The second way: when the device is installed and locked inside an amounted switch box, we need to reset the device via Mechanical switch input connected to S1 terminal of the device.

Switch “Off→ On→ Off→ On→ Off→ On→ Off→ On→ Off→ On” switch, that is, keep pressing the mechanical switch for ten times rapidly and continuously within 5 seconds (complete the 5 Off-ON cycle). If the device reset is successful, the lamp connected with switch will slow flash twice then keep on.

### 3.3 Wi-Fi Work Mode

Once the WiFi connection is successful, the device will work in two work modes.

Work Mode	WiFi Control	Direct Control
APP local control	Yes	Yes
APP remote control	Yes	N/A
Alexa/ Google Home	Yes	N/A

\*After connection successfully, users could set work mode in APP

## 4. Wi-Fi Configuration (Add new Device)

### 4.1 Easy Mode add device

Wi-Fi networking configuration for 2 Way 1Channel Fan Controller + 1Channel Smart Relay Switch, SW06-F11 is convenient and rapid, mobile

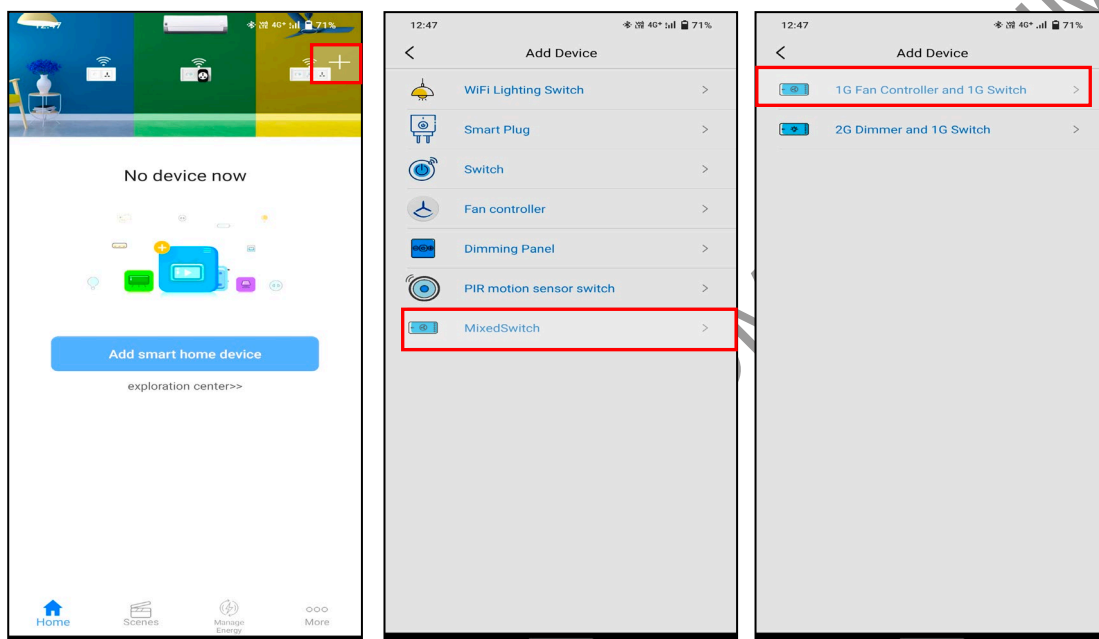
could be connected to the designated router quickly, the whole process is generally less than 15 seconds.

Make sure the wiring of WiFi smart switch is completed and is powered on.  
(The Smart Switch only supports 2.4GHz Wi-Fi router)

### Configuration process:

Step 1. Download Tata Power EZ HOME from App store/Google Play or scan QR code to download and install APP. Register yourself with your email and sign in. Connect mobile phone to 2.4G WiFi.

Step 2. Open “EZ HOME” APP, register and login, click “+” to add Mixed Switch. Select “Mixed Switch”, enter device secondary list, select “1G Fan Controller and 1G Switch”.



Step 3. Enter networking interface, WiFi will show the WiFi your mobile phone connected, enter WiFi password, click “Configure signal”. (The WiFi Smart Switch only supports 2.4GHz WiFi router).



Step 4. Check device status, after wiring and device is powered on, please check if the led indicator flashes quickly. If yes, please confirm and enter

“Configure Signal” directly. If not, please reset device.

**Operation: long press reset button for 5 seconds until the LED indicator flashes quickly.**

Confirm “Blue indicator is flashing” and start connection.

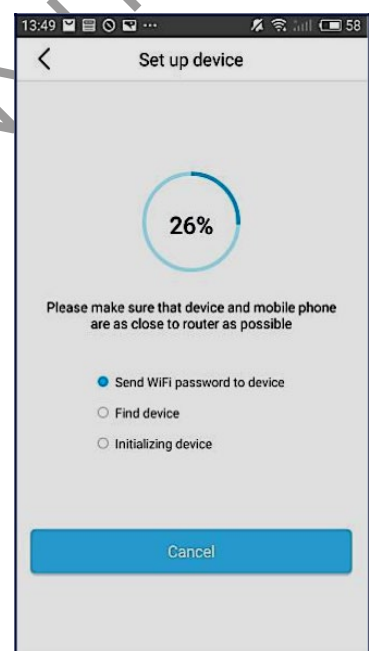
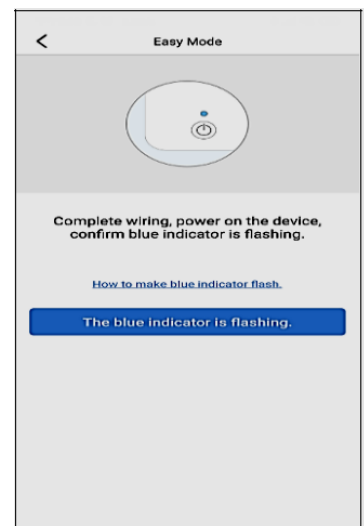
Two ways to reset WiFi lighting switch:

**The first way: for the first APP configuration, reset device via device reset button:** long press the reset button for 5 seconds until the led indicator flashes quickly.

The second way: when the device is installed and locked inside an amounted switch box, we need to reset the device via Mechanical switch input connected to S1 terminal of the device.

Switch “Off→ On→ Off→ On→ Off→ On→ Off→ On→ Off→ On” ordinary switch, that is, keep pressing the Mechanical switch input connected to S1 terminal of the device for ten times rapidly and continuously within 5 seconds (complete the 5 Off-ON cycle). If the device reset is successful, the lamp connected with switch will slow flash twice then keep on.

Step 5. Configuration is in progress”.



If the configuration in easy mode is failed, you will find following page, Click “Add device by AP mode” button to add device as following steps.

#### 4.2 Add device in AP Mode

**Remark: This configuration is a supplementary configuration way, if you failed configuration in Easy mode, please try AP mode to add device.**

Step 1. If the configuration in Easy mode is failed, you will find following page, Click “Add device by AP Mode” button to add device.

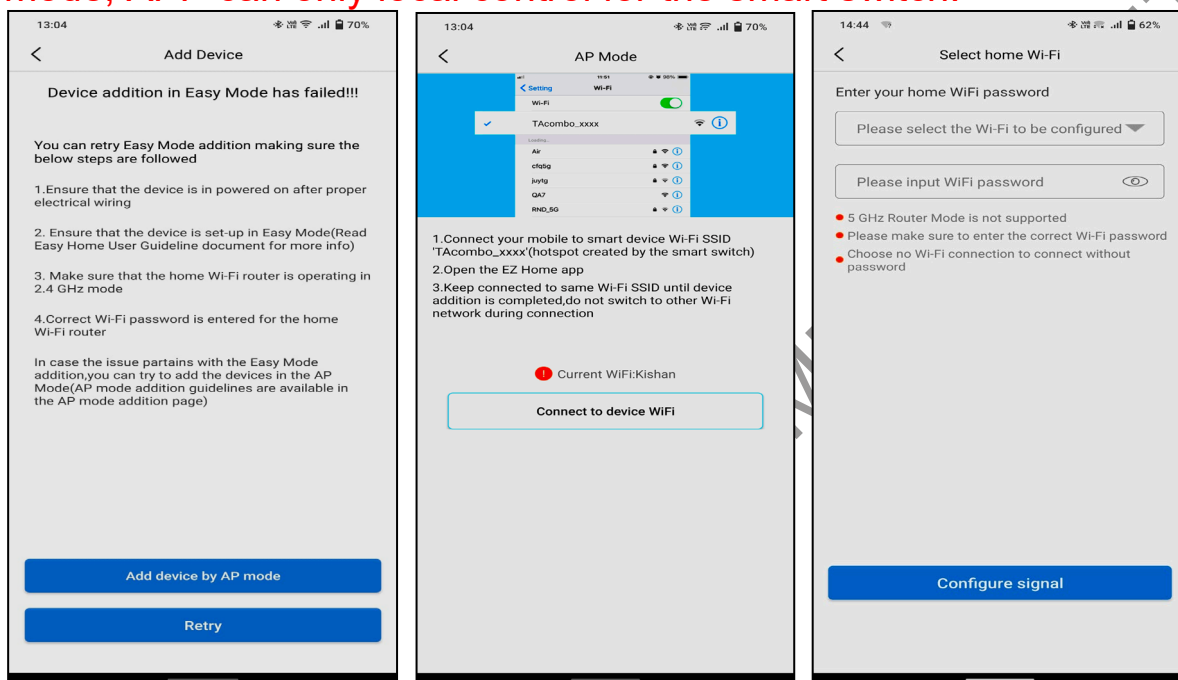


Step 2. According to page prompt, go to WLAN setting in your smart phone and select “TAcombo\_XXXX” for your WIFI, no need to input password.

Step 3. Once you select the “TAcombo\_XXXX”, go back to app, click ▼ to select WiFi SSID and input password, click “Next Step” to start connection. Once devices configured successfully, you will find it in device list.

### Remark:

1. If there is no WiFi around smart switch, you can click ▼ select “direct control”, and the smart switch will work in direct control work mode, in this mode, APP can only local control for the smart switch.



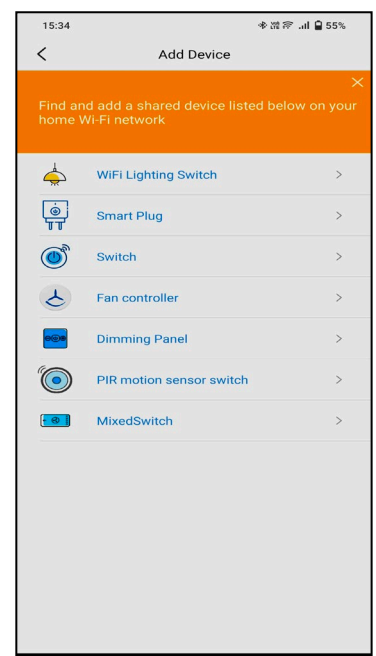
## 4.3 Shortcut Configuration

If the device has been configured in STA mode, administrator can share the device to users to help their configure device, the users who configure switch just need to keep mobile in WiFi/4G network.

### Remark:

1. Only administrator can turn on sharing mode, administrator is the first user account who connected smart switch.

2. Sharing mode is enabled for default, if the administrator close the sharing mode in setting, the users can't find device via this configuration.



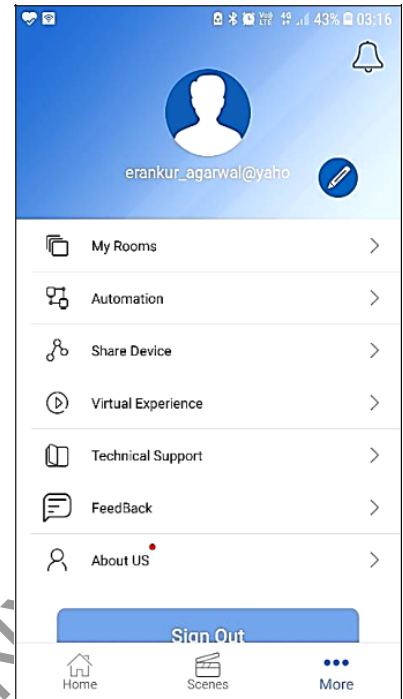


## 4.4 Share Configuration

If the device has been configured in STA mode, administrator can share the device to users to help their configure device, the users who configure switch just need to keep mobile in Wi-Fi/4G network.

Remark:

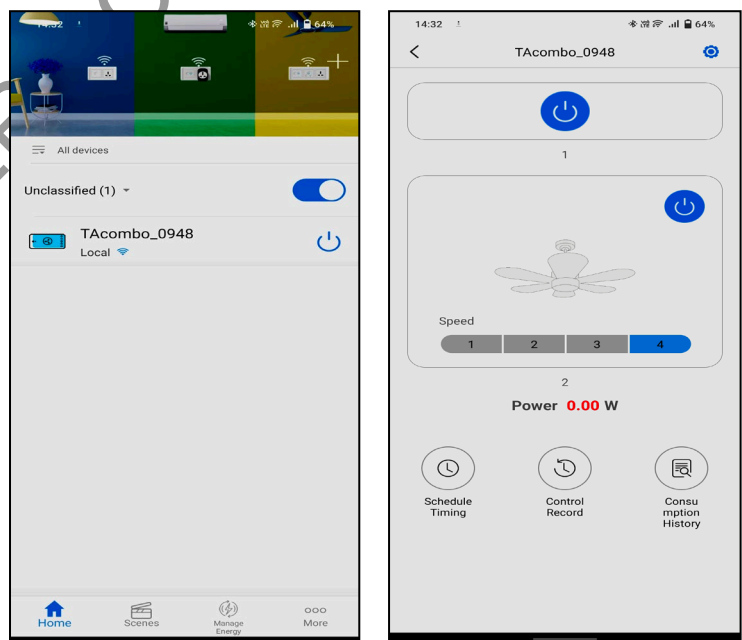
1. Only administrator could share device with other account.
2. The users who is shared with Smart switch will receive prompt message in APP but do not have permission to share others again.
3. The user who is shared with smart switch could local or remote control the smart switch.



## 4.5 Control Interface

After connection successful, the device appears in the device list, click device to enter control page the device can be controlled by APP with following functions.

- Schedule Timing function
- Control Record view
- Real Time Power monitor
- Support local and remote control



## 4.6 Works with Alexa and the Google Assistant

The WiFi lighting switch works directly with Amazon Alexa and the Google Assistant, you can manage your devices through voice control like turn on/off. Assign a name to each WiFi lighting switch and communicate with

each switch by name when making a voice command, Users could purchase these intelligent speakers on the market for convenient usage.



Figure 2.

## 5. Disclaimer

---

This specification is a detailed description of series products produced by the company, please read carefully and fully understand the detailed specification parameters of the product.

All rights reserved by company, without permission of our company, the company do not allow to totally or partly copy, translate or simplify this specification for any other usage.

We do not provide any guarantees for the product information, parameters, photos or other links in the specification, users bear the risks.

We declare that this specification or other relevant information without any implied warranties of business assurance or business contract assurance. All information inside is only for operation, product user manual or reference, it can't be regarded as a basis or complement for any other contract.

We have made reasonable efforts to make this document content accurate and up-to-date.

but our company reserves the right to update or revise the content and its related information at any time without additional notice.