

1 GANG CURTAIN CONTROLLER SWITCH**ITEM: SW10-C11****ITEM DESCRIPTION: 1GANG 175W CURTAIN CONTROLLER SWITCH, SW10-C11 (IN BUILT UART WIFI MODULE GWF-KM26)****VERSION: V1.0****DATE: 16-05-2025****1. Product Instruction****1.1 Product Overview**

The Curtain Controller Switch should be used in conjunction with free APP. The device allows you to control motorized curtain from anytime and anywhere, making your home more comfortable and more convenient. Furthermore, with intelligent speaker, we can turn operate the device via voice command.

1.2 Product Figure

1Gang 175W Curtain Controller Switch, SW10-C11 appearance:

**1.3 Product Function**

- It can be installed in a wall mounted switch box to control electric curtains at home.
- 1 gang smart curtain control support.
- Works with Alexa/the Google Home, you can control the device via voice command.
- After wiring, we can click bell switch SW10 input connected to open

or close electric curtain.

1. Click bell switch S1 to open curtains. If the curtains is in the opening process, you can click bell switch S1 again to stop opening.
 2. Click bell switch S2 to close curtains. If the curtains is in the closing process, you can click bell switch S2 again to stop closing.
- Set schedule: Open/Close your curtain based on specific time you set
 - User-defined scenes- Group control
 - Multiple users control
 - Support STA and AP work mode
 - Control history view
 - Support 2.4GHz WiFi

1.4 Works with Alexa and the Google Home

The Curtain Controller Switch works directly with Amazon Alexa and the Google Home, you can manage your devices through voice command to open/close the curtain. Assign a name to each Modular Touch Curtain Controller and communicate with each Curtain Controller Switch by name when making a voice command. Users could purchase these intelligent speakers like Alexa or Google Home from the market for convenient usage.



2. User Guide

2.1 Prerequisites

- The Curtain Controller Switch support local/remote control via 2.4GHz WiFi wireless technology, the device must be used in the environment where 2.4GHz WiFi network is available, and the user must know the WiFi network name and corresponding password.
- Special Tips: the Wi-Fi network switch connected generally does not need special adjustment, only in a few case, users may need to check

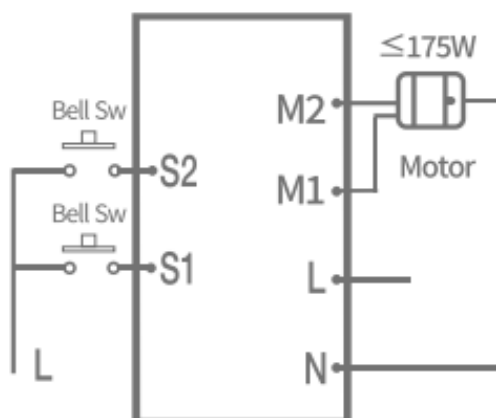
working status of Wi-Fi router: Connected devices number, Wi-Fi signal status or the state of surrounding Wi-Fi network.

- To connect controller to WiFi router, users need to download and install corresponding APP and complete device pairing via APP.
- There is power limitation for load, please note that the max output power is not more than 175W with 240V, 50Hz AC power input
- If customers need to voice control the product, please purchase the intelligent speaker correspondingly, configure the speaker according to user guide.

2.2 Wiring mode

Note: Before wiring, please power off appliance first, cut off original power line, then wiring of Curtain Controller Switch by referring to following figure.

Special note: The quantity of Curtain connected with Curtain Controller Switch can be single.



Wiring Description:

Special note: Once wiring is completed, please process APP configuration immediately (Add new device). In this process, the reset button would be applied to reset device to make device enter configurable state, so that we need to complete app configuration before locking the wall mounted switch box

Identity	I/O	Function
N	Input	AC neutral line input
L	Input	AC live line input
S1	Input	Bell switch S1 input to control M1
S2	Input	Bell switch S2 input to control M2
M1	Output	M1 is connected with motor to open the curtains
M2	Output	M1 is connected with motor to open the curtains

2.3 Parameters

Parameters	Details
ON/OFF control	1 Gang
Grade Control	Curtain Control 0 - 100%
Data transmission	WiFi 2.4GHz
RF Module	GWF-KM26
Wireless standard	802.11 b/g/n
Input voltage	110 ~ 240 VAC
Maximum Output power	175W
Material	PC flame retarding
Fire rating	UL 94
Dimension	48*50.5*46mm
Operating Temperature	-10°C~ +50°C
Operating Humidity	20%~85% (No condensing)
Application	Curtain Control
APP Support	Support Android6.0 and iOS11.0 or above
RF Range	30 meters indoor,45 meters outdoors

3. Configuration Preparation

3.1 APP Download

The APP is compatible with Android 6.0 and iOS11.0 or above system. iOS users could search the APP in App Store. Android users could search the APP in Google Play.

APP name: "TATA Power EZ Home"



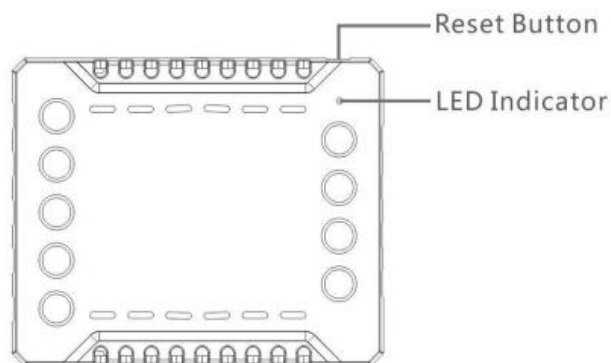
Tata Power EZ HOME

(QR code TATA Power EZ Home for both Play Store & App Store)

3.2 Factory Reset (enter configurable status)

"Factory Reset" is an important step in APP configuration (Add new device),

which make device enter configurable state.



Two ways to reset:

The first way: **For the first APP configuration, we suggest to reset device by this way:** long press the reset button for 5 seconds until the LED indicator flashes quickly.

The second way: When the device is installed and locked inside an amount switch box, we need to reset the device via Mechanical switch input connected to S1 terminal of the device.

Switch “Off→ On→ Off→ On→ Off→ On→ Off→ On→ Off→ On” switch, that is, keep pressing the ordinary switch for ten times rapidly and continuously in 5 seconds (complete the 5 Off-ON cycle). If the device reset is successful, the lamp connected with the ordinary switch will slow flash twice then keep on.

3.2 WiFi Work Mode

Once connection successfully, the device will work in two work mode.

Work Mode	WiFi Control	Direct Control
APP local control	Yes	Yes
APP remote control	Yes	N/A
Alexa/the Google Home	Yes	N/A

*After connection successfully, users can set work mode in APP.

4. Add new device

4.1 Easy mode add device

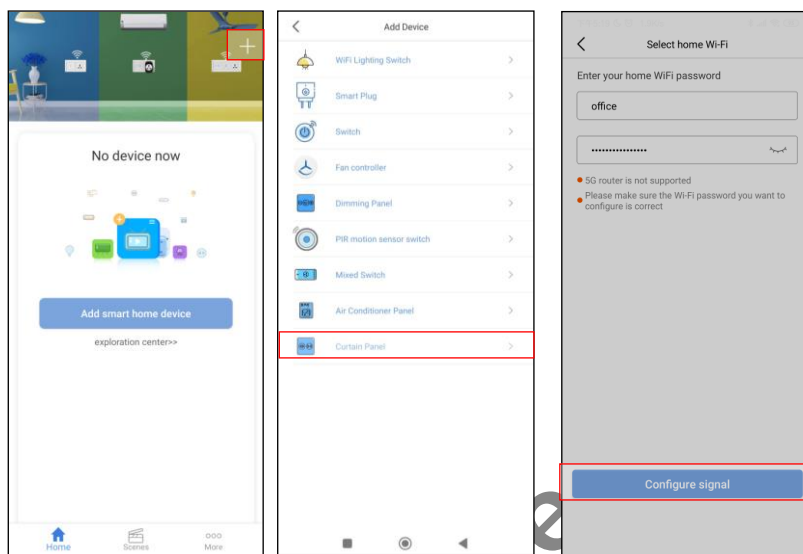
The Tata Power Company Limited

Make sure the wiring of Modular Touch Curtain Controller is completed and it is powered on. Connect cellphone to WiFi. (The device only supports 2.4GHz WiFi router), complete installation of “EZ Home” APP.

Step 1. Power on the device, search in App store/Google Play or scan QR code to install APP, connect mobile phone to 2.4G WiFi.

Open “EZ HOME ” APP, register and login, click “+”, select “Curtain Panel”.

Step2. Enter “Networking” interface, input current WiFi password. click “Configure signal”.



Step3. Check device status, after wiring and

device is powered on, please check if the led indicator flashes quickly. If yes, please confirm and enter “Configure Signal” directly. If not, please reset device.

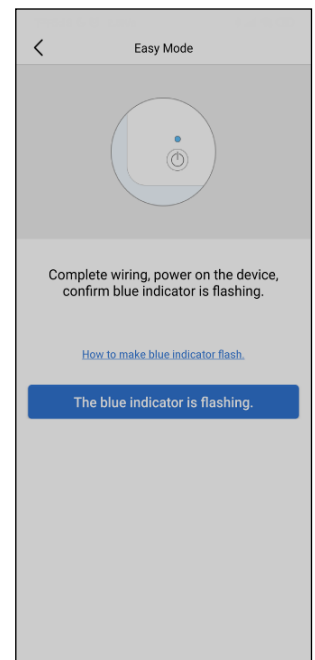
Operation: long press reset button for 5 seconds until the LED indicator flashes quickly.

Confirm “Blue indicator is flashing” and start connection.

Two ways to reset WiFi lighting switch:

The first way: for the first APP configuration, reset device via device reset button: long press the reset button for 5 seconds until the led indicator flashes quickly. The second way: when the device is installed and locked inside an amounted switch box, we need to reset the device via Mechanical switch input connected to S1 terminal of the device.

Switch “Off→ On→ Off→ On→ Off→ On→ Off→ On→ Off→ On” switch,



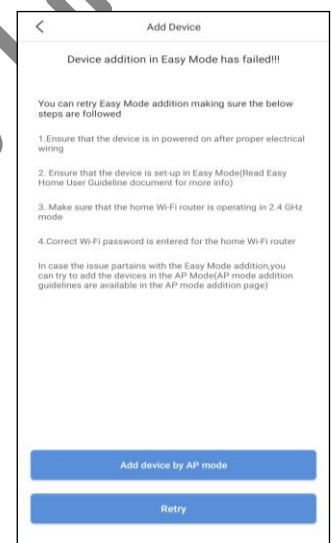
The Tata Power Company Limited

that is, keep pressing the ordinary switch for ten times rapidly and continuously in 5 seconds (complete the 5 Off-On Cycle). If the device reset is successful, the lamp connected with the ordinary switch will slow flash twice then keep on.

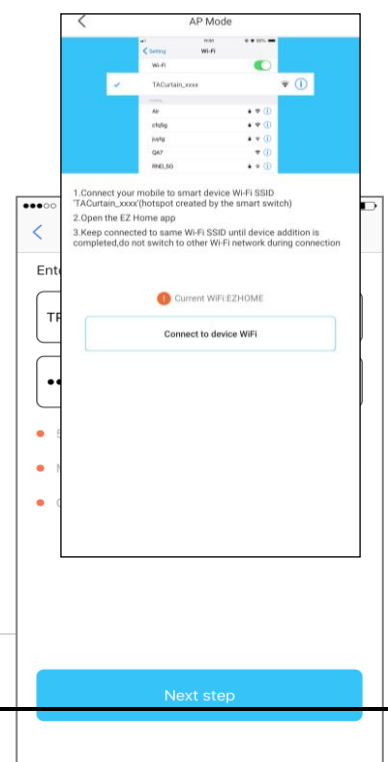
4.2 AP mode add device

Remark: This configuration is a supplementary configuration way, if you failed configuration in Easy mode, please try AP mode to add device.

Step1. If the configuration in easy mode failed, you will find following page, Click “Add device by AP mode” button to add device. Please confirm the blue indicator starts flashing slowly.



Step2. According to page prompt, go to WLAN setting in your smart phone and click to “Connect device WiFi” and then select the “TACurtain_XXXX”, no need to input password.



Step3. Once you select the “TACurtain_XXXX”, go back to app, click ▼ to select WiFi and input password, click “Next Step” to start connection. Once devices configured successfully, you will find it in

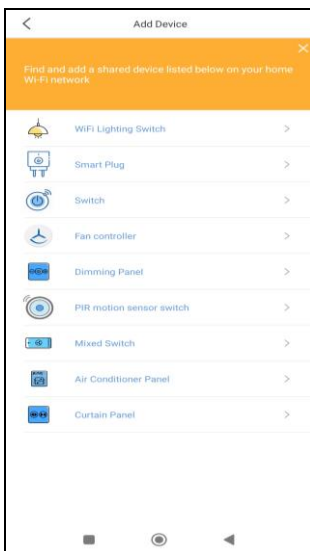
device list after connecting mobile with Wi-Fi router.

Remark:

1. If there is no Wi-Fi around Smart Switch, you can click ▼ select "direct control", and the Smart Touch Panel Switch will work in direct mode, in this mode, APP can only local control for the Smart Touch Panel Switch.
2. If the device needs to be voice controlled by Alexa/the Google Home or remote controlled by APP. The device must be added in Wi-Fi network.

4.3 Shortcut Configuration

If the device has been configured successfully, users who want to control the modular touch switch just connect the mobile to Wi-Fi which the switch connected, then Open the APP, click orange prompt message to add device, after configuration, users can local control and remote control the curtain controller.



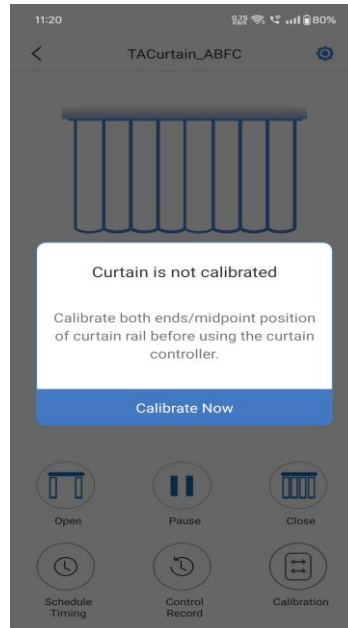
Remark:

1. Only administrator can turn on sharing mode, administrator is the first user account who is connected to smart touch switch.
2. Sharing mode is enable for default, if the administrator close the sharing mode in setting, the users can't find device via this configuration.

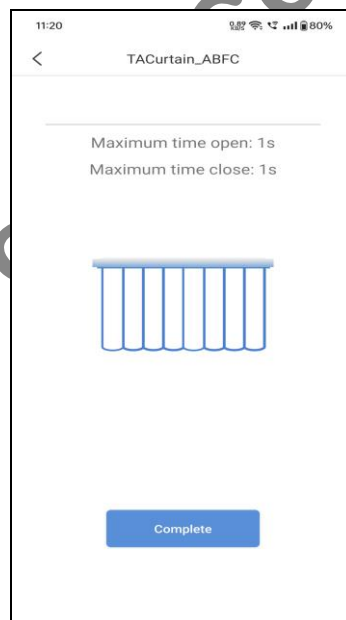
4.4 Calibration

After the device configuration is completed, once you press the device button, the calibration process of the curtains starts one by one.

Step1. Press the "Calibrate Now" option to start calibration.



Step2. At first the curtain starts to Close and once the curtains the fully closed, the curtain starts to Open and then displays the curtain Maximum Open time and Maximum Close time after 2 cycle of Close & Open operation of curtain motor. Press on "Complete" to finish Calibration of Curtain.

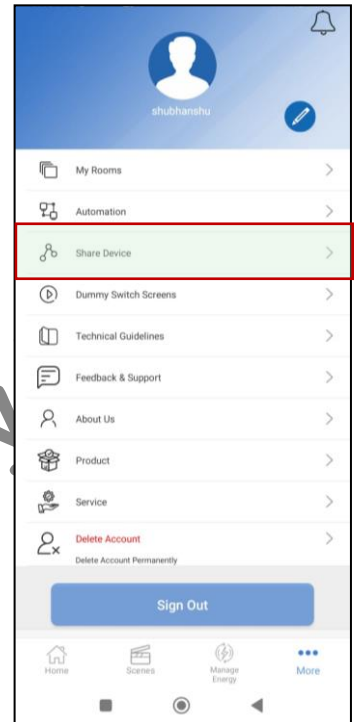


4.5 Share Configuration

If the device has been configured in STA mode, administrator can share the device to users to help their configure device, the users who configure curtain controller just need to keep mobile in Wi-Fi/4G network.

Remark:

1. Only administrator could share device with other account
2. The users who is shared with modular smart WiFi curtain controller will receive prompt message in APP but do not have permission to share others again.
3. The user who is shared with modular smart WiFi curtain controller could local or remote control the curtain/blinds.



4.6 Wi-Fi Working mode

Curtain Controller Switch Wi-Fi working mode is “Wi-Fi control” mode and “Direct control” mode.

In “Wi-Fi control” mode: After mobile connected to Wi-Fi, users just need to input corresponding Wi-Fi password in “EZ HOME ” APP, when the device receive the router broadcast, it will connect to network automatically.

In “Direct Control” mode: when there is no Wi-Fi around the curtain controller, mobile phone is connected to Smart Switch Wi-Fi directly. Mobile phone connects to the Curtain Controller Switch signal “TACurtain_XXXX ”.

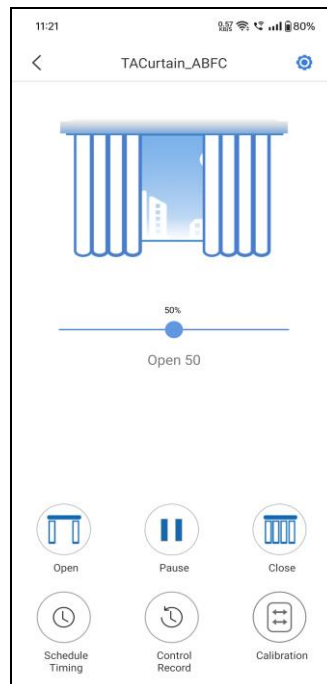
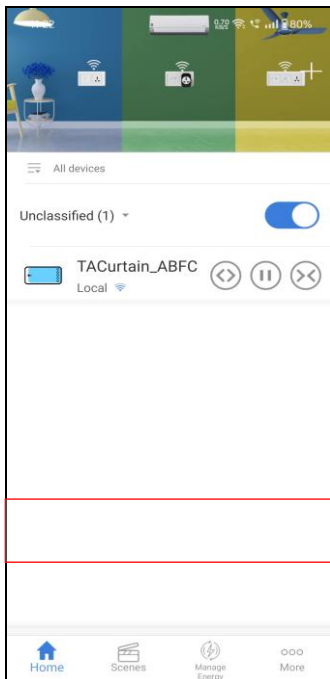
If users want to connect in “Direct control” mode: Once you complete factory reset operation ,the blue LED will start flashing slowly after 60 seconds, connect mobile phone to Curtain Controller Switch Wi-Fi “TACurtain_XXXX ” , enter networking and select “Direct control” then they can search and connect devices.

If users want to connect to “Wi-Fi control” mode (from “Direct control” mode), long press the reset button for 5 seconds till Wi-Fi indicator flashes quickly and try to add device again.

4.7 APP Control

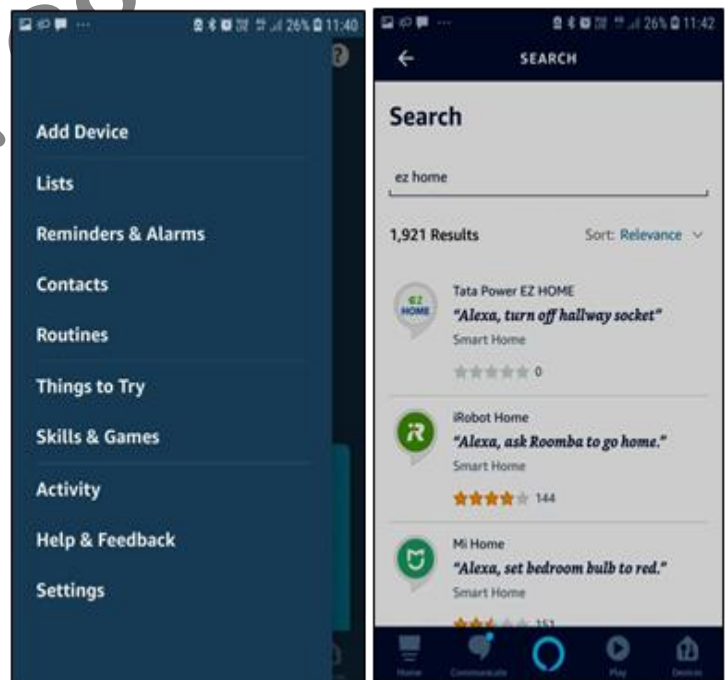
Click device enter device control page, we can Open/Close/Pause, adjust





curtain position for partial opening & Schedule operation.



4.8 Set “Alexa” App

1. Once user installs the Alexa APP, the APP will ask you to register, select language and enter your email, input verification code and create a password. If you could not see the verification code well, you can click the code button to refresh and input again.
2. Once APP configuration is successful, long press corresponding device in APP device list to set a suitable name such as “CURTAIN” for your device, without unique names, you will be difficult to control the device via your voice with Alexa.
3. Open “Alexa” APP, click “More”
4. Click” Skills and Games”
5. Input “Tata Power EZ HOME” to search skills, click search

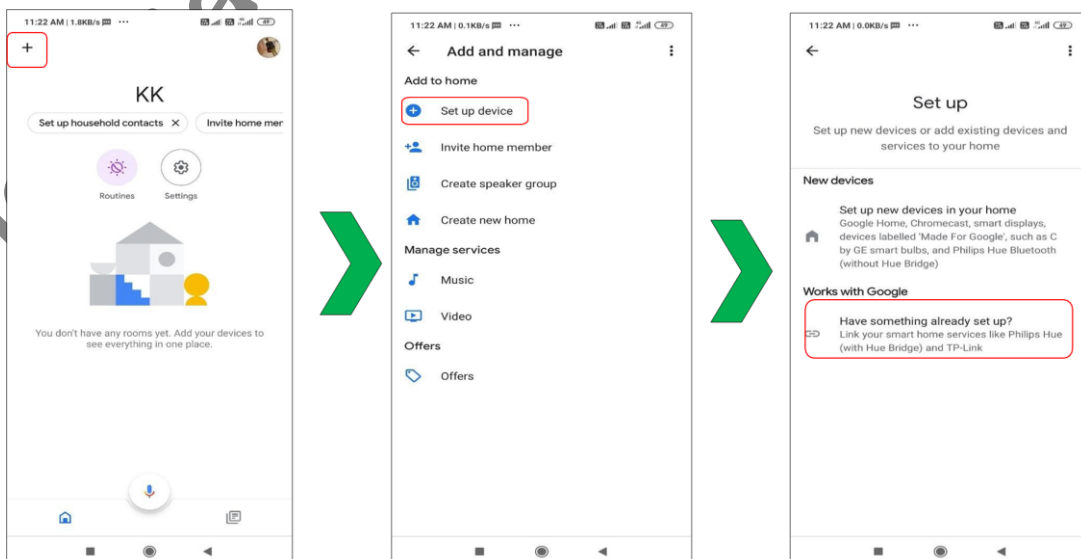


6. Click “EZ HOME  ” and enter
7. Click 
8. Input your “EZ HOME” APP account and password which you have registered. (Attention: this is not the account and password of Alexa APP). Click 
9. Close this window to discover smart devices you can control with Alexa
10. Click , then looking for devices
11. If successful, you will find the device list, then you can voice control the smart curtain controller with Alexa. Just say “Alexa, Turn on CURTAIN” to Open the curtains
12. If failed, please check FAQs to find out reasons, then discover devices again. Click “Add Device”, Alexa will help you discover devices again

Remark: If you rename the smart switch name in APP, you need to search device again in Alexa APP, then to control the switch via voice commands.

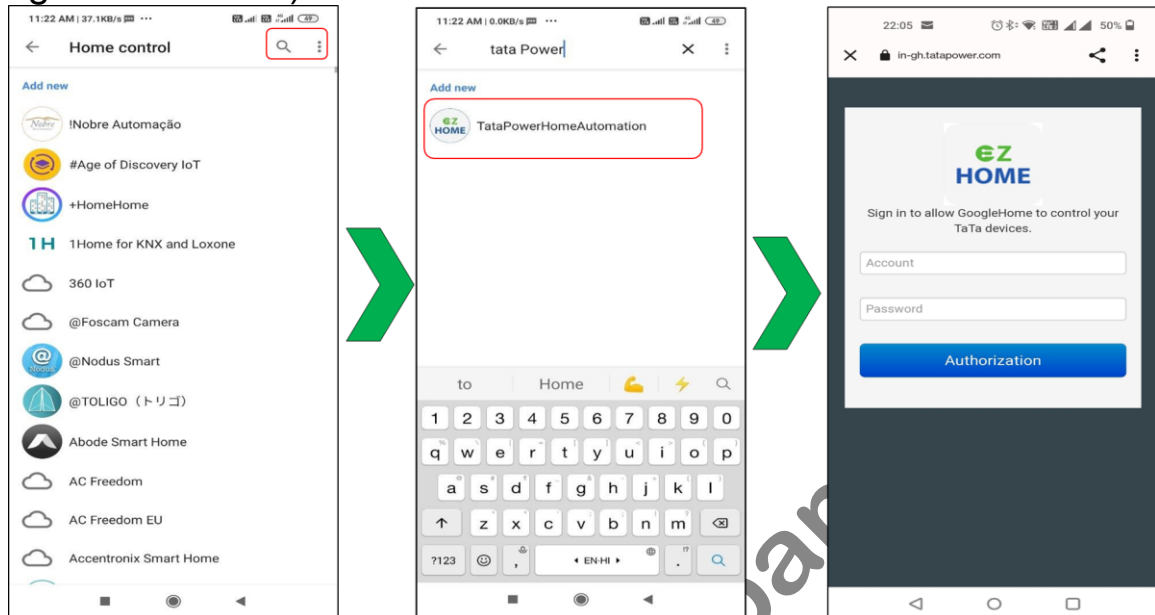
4.9 Set “Google Home” App

1. Once user installs the Google Home APP, the APP will ask you to register & enter your email.
2. In the Home page, Select the “+” symbol
3. Select the “Set up device”
4. In the Works with Google section, select “Have something already set up”.



The Tata Power Company Limited

5. On the Search Tab, search for “TataPowerHomeAutomation”
6. Input your “Tata Power EZ HOME” APP account and password which you have registered. (Attention: this is not the account and password of Google Home APP). Click [Authorization](#)



13. Once the authorization is completed, Google Home will discover smart devices. Just say “OK Google, turn ON CURTAIN” to Open the curtains

Remark: If you rename the smart switch name in APP, you need to search device again in Google Home to control the switch via voice commands.

5. Disclaimer

This specification is a detailed description of series products produced by the company, please read carefully and fully understand the detailed specification parameters of the product.

All rights reserved by Company, without permission of our company, The company do not allow to totally or partly copy, translate or simplify this specification for any other usage.

We do not provide any guarantees for the product information, parameters, photos or other links in the specification, users bear the risks.

We declare that this specification or other relevant information without any implied warranties of business assurance or business contract assurance.

The Tata Power Company Limited

All information inside is only for operation, product user manual or reference, it can't be regarded as a basis or complement for any other contract.

We have made reasonable efforts to make this document content accurate and up-to-date.

But our company reserves the right to update or revise the content and its related information at any time without additional notice.

The Tata Power Company Limited