

PREMIUM TOUCH SWITCH 5A- 4CH

ITEM: TS4-05-2 / TS4-05-4 / TS4-05-6 / TS4-05-8

ITEM DESCRIPTION: 4 GANG 5A MODULAR TOUCH RELAY SWITCH (IN BUILT UART WIFI MODULE GWF-KM26)

VERSION: V1.4

DATE: 2025-05-23

1. Product Instruction

1.1 Product Overview

The modular touch relay switch should be used in conjunction with free APP, The device allows you to power on/off four home electronics appliances or lamps anytime and anywhere, making your home more secure and more convenient. Furthermore, with intelligent speaker, we can control the device via voice command.

The 4 channel 5A Modular Touch Relay switch works with Amazon Alexa and the Google Home, the switch can be controlled via Alexa/the Google Home voice service like ON/OFF control.

1.2 Product Appearance

4 channel 5A Modular Touch Relay Switch appearance:



1.3 Product Function

- High quality of Touch Button switch, control power intensive electrical home appliance simply by touching button
- 4 channel ON/OFF control
- Works with Alexa/the Google Home, control the device via voice command
- Advanced Wi-Fi access technology, users configure network one step intelligently by APP
- Control lamps and appliance from anywhere by APP with Wi-Fi/4G access (Local and Remote)
- Set schedule: Turn on/off your devices based on specific time you set
- Energy monitoring, view electricity usage during a period of time.
- Real-time power review
- Device interaction
- User-define scenes - Group control
- Multiple users control
- Control history view
- Support 2.4GHz Wi-Fi

1.4 Works with Alexa and the Google Home

The 4 channel 5A Modular Touch Switch works directly with Amazon Alexa and the Google Home, you can manage your devices through voice control like turn on/off. Assign a name to each Modular Touch Relay Switch and communicate with each switch by name when making a voice command, Users could purchase these intelligent speakers like Alexa/Google Home from the market for convenient usage.



Amazon Echo Google Home

2. User Guide

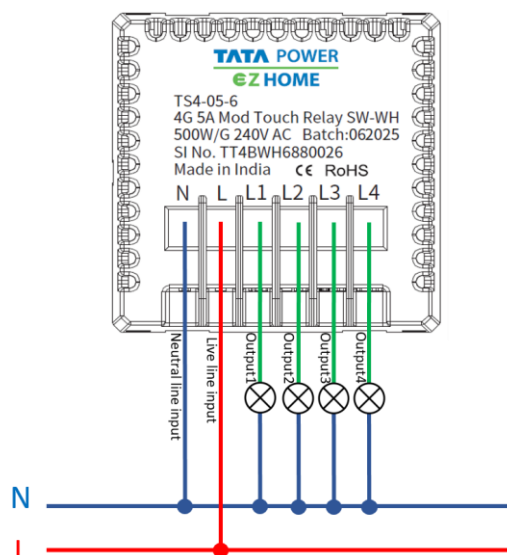
2.1 Prerequisites

- The switch support local/remote control via 2.4GHz Wi-Fi wireless technology, the device must be used in the environment where 2.4GHz Wi-Fi network is available, and the user must know the Wi-Fi network name and corresponding password.
Special Tips: the Wi-Fi network switch connected generally does not need special adjustment, only in a few case, users may need to check working status of Wi-Fi router: Connected devices number, Wi-Fi signal status or the state of surrounding Wi-Fi network.
- To connect switch to Wi-Fi router, users need to download and install corresponding APP and complete device paring via APP.
- There is power limitation for load, please note that the max output power is no more than 2000W, max output power per channel is 500W (240V, 50Hz AC power input)
- If customers need to voice control the product, please purchase the intelligent speaker correspondingly, configure the speaker according to user guide.

2.2 Wiring mode

Note: Before wiring, please power off appliance first, cut off original power line, then perform wiring 4 channel 5A Modular Touch Relay switch by referring to following figure.

Special note: The quantity of lamp or device connected with Modular Touch Relay Switch can be single or multiple.



Wiring Description:

Note: The lines sheathed in red is AC input, the lines sheathed in green is AC output

Pin	Identity	Function
L	AC Live line input (red line)	Live line, AC Live line input
N	AC Neutral line input (Blue line)	Neutral line, AC Neutral line input
L1	AC Live line output (Green line)	AC live line output, connect to lamp power live
L2	AC Live line output (Green line)	AC live line output, connect to lamp power live
L3	AC Live line output (Green line)	AC live line output, connect to lamp power live
L4	AC Live line output (Green line)	AC live line output, connect to lamp power live

2.3 Parameters

Parameters	Details
ON/OFF control	4 Gang
Data transmission	Wi-Fi 2.4GHz
RF Module	GWF-KM26
Wireless standard	802.11 b/g/n
Rated Voltage	240VAC
Rated output power (total)	2000W
Rated output power/gang	500W
Plastic Material	PC flame retarding
Fire rating of Plastic Material	UL 94
Dimension	48*50.5*46mm
Operating Temperature	-10°C~ +50°C
Operating Humidity	20%~85% (No Condensing)
Application	Lamps or household appliances
APP Support	Support Android6.0 and iOS11.0 or above
RF Range	30 meters indoor, 45 meters outdoors

3. Configuration Preparation

3.1 APP Download

The APP is compatible with Android 6.0 and iOS11.0 or above system. iOS users could search the APP in App Store. Android users could search

the APP in Google Play.

APP English name: "TATA Power EZ Home"



Tata Power EZ HOME

(QR code TATA Power EZ Home for both Play Store & App Store)

3.2 Wi-Fi Work Mode

Once connection successfully, the device will work in two work mode.

Work Mode	Wi-Fi Control	Direct Control
APP local control	Yes	Yes
APP remote control	Yes	N/A
Alexa/the Google Home	Yes	N/A

*After connection successfully, users can set work mode in APP.

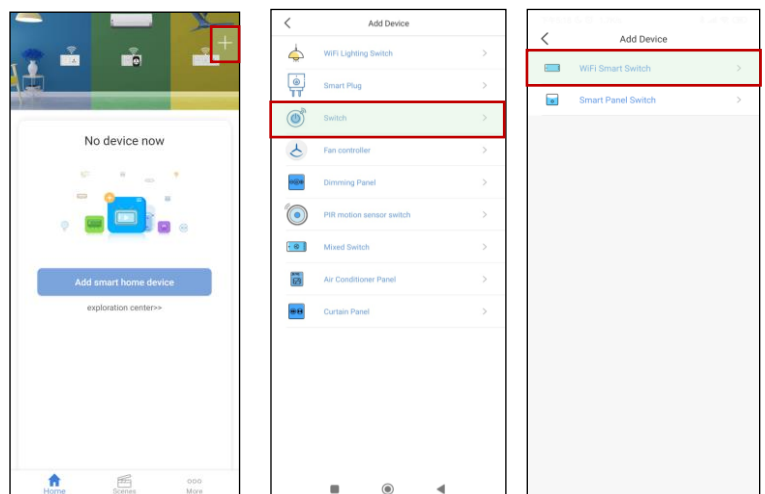
4. Add new device

4.1 Easy mode add device

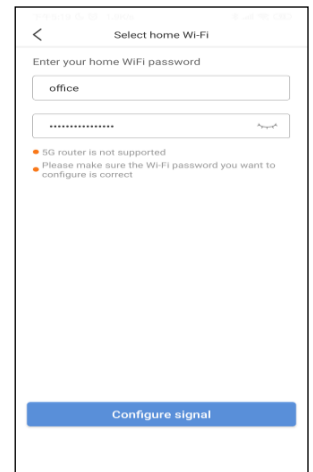
Make sure the wiring of Modular Touch Relay Switch is completed and it is powered on. Connect cellphone to Wi-Fi. (The device only supports 2.4GHz Wi-Fi router), complete installation of "EZ Home" APP.

Step 1. Power on the switch, search in App store/Google Play or scan QR code to install APP, connect mobile phone to 2.4G Wi-Fi.

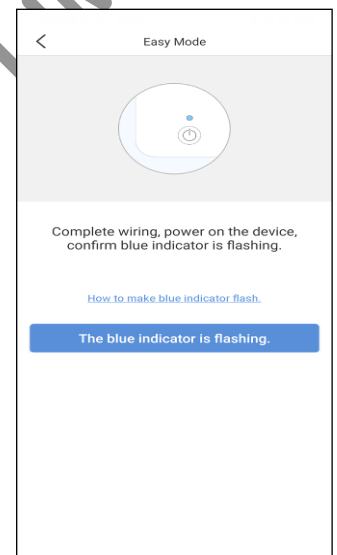
Step2. Open "EZ HOME" APP, register and login, click "+", select "Switch", enter device secondary list, select "Wi-Fi Smart Switch".



Step3. Enter “Networking” interface, input current Wi-Fi password, click “Configure signal”.



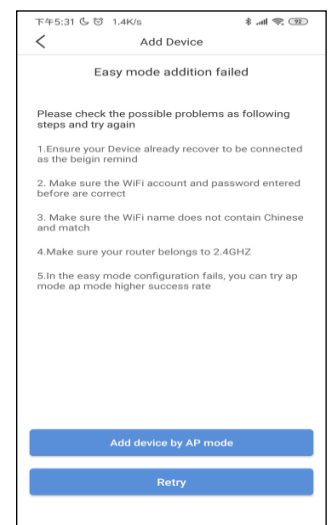
Step4. Check device status, after wiring and device is powered on. If blue indicator flashes quickly, please confirm directly. If not, please reset device: long touch Gang-1 ON/OFF button for 5 seconds until blue indicator flashes. If yes, please confirm and process next step “Blue indicator is flashing”.



4.2 AP mode add device


Remark: This configuration is a supplementary configuration way, if you failed configuration in Easy mode, please try AP mode to add device.

Step1. If the configuration in easy mode failed, you will find following page, Click “Add device by AP mode” button to add device. Please confirm the blue indicator starts flashing slowly.




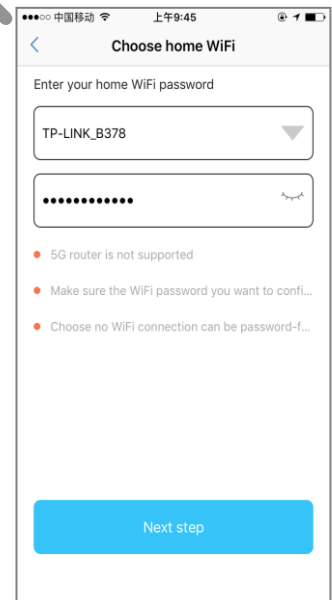
Step2. According to page prompt, go to WLAN setting in your smart phone and select the “TAswitch_XXXX”, no need to input password.



Step3. Once you select the “TAswitch_XXXX”, go back to app, click  to select Wi-Fi and input password, click “Next Step” to start connection. Once devices configured successfully, you will find it in device list after connecting mobile with Wi-Fi router.

Remark:

1. If there is no Wi-Fi around Smart Switch, you can click  select "direct control", and the Smart Touch Panel Switch will work in direct mode, in this mode, APP can only local control for the Smart Touch Panel Switch.
2. if the device needs to be voice controlled by Alexa/the Google Home or remote controlled by APP. The device must be added in Wi-Fi network.

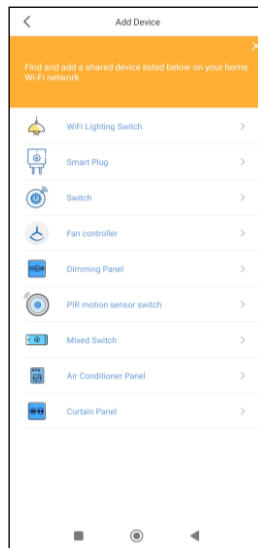


4.3 Shortcut Configuration

If the device has been configured successfully, users who want to control the modular touch switch just connect the mobile to Wi-Fi which the switch connected, then Open the APP, click orange prompt message to add device, after configuration, users can local control and remote control the switch.

Remark:

1. Only administrator can turn on sharing mode, administrator is the first user account who connected smart device.
2. Sharing mode is enable for default, if the administrator close the sharing mode in setting, the users can't find device via this configuration.

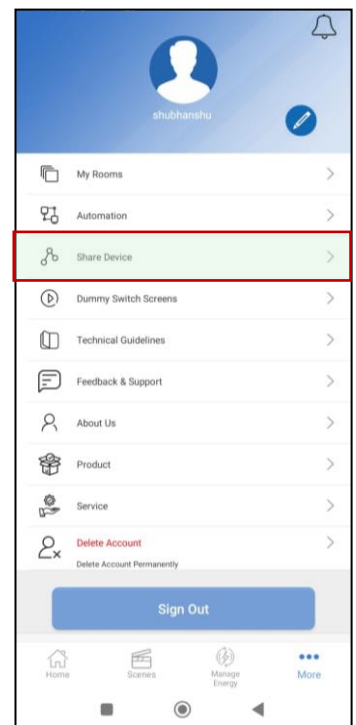


4.4 Share Configuration

If the device has been configured in STA mode, administrator can share the device to users to help their configure device, the users who configure the switch just need to keep mobile in Wi-Fi/4G network.

Remark:

1. Only administrator could share device with other account
2. The users who is shared with modular touch smart WiFi switch will receive prompt message in APP but do not have permission to share others again.
3. The user who is shared with modular touch smart WiFi switch could local or remote control the lamps/household appliances.



4.5 Wi-Fi Working mode

Modular Touch Smart Switch Wi-Fi working mode is “Wi-Fi control” mode and “Direct control” mode.

In “Wi-Fi control” mode: After mobile connected to Wi-Fi, users just need to input corresponding Wi-Fi password in “EZ HOME ” APP, when the device receive the router broadcast, it will connect to network automatically.

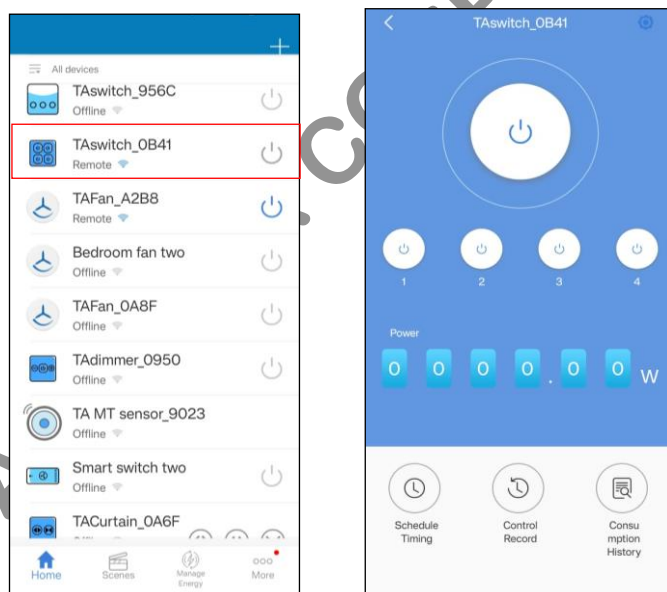
In “Direct Control” mode: when there is no Wi-Fi around the switch, mobile phone is connected to Smart Switch Wi-Fi directly. Mobile phone connects to the Smart Switch signal “TAswitch_XXXX”.

If users want to connect to “Direct control” mode: Once you complete factory reset operation ,the blue LED will start flashing slowly after 60 seconds, connect mobile phone to Smart Switch Wi-Fi “TAswitch_XXXX” , enter networking and select “Direct control” then they can search and connect devices.

If users want to switch to “Wi-Fi control” mode (from “Direct control” mode), long touch Gang-1 power ON/OFF button for 5 seconds till Wi-Fi indicator flashes quickly and try to add device again.

4.6 APP Control

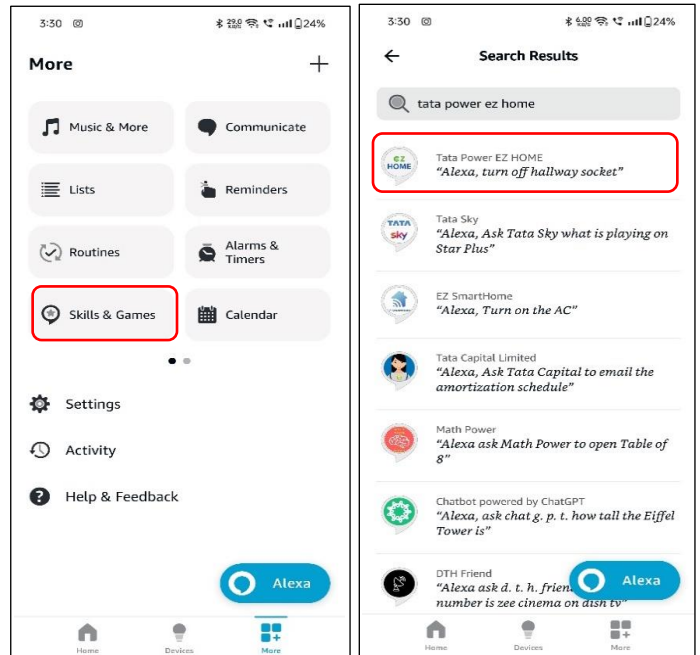
After connection successful, the device will appear in device list, click device enter device control page, the device can be controlled by APP.



4.7 Set “Alexa” App

1. Once user installs the Alexa APP, the APP will ask you to register, select language and enter your email, input verification code and create a password. If you could not see the verification code well, you can click the code button to refresh and input again.

2. Once APP configuration is successful, long press corresponding device in APP device list to set a suitable name such as “COCO” for your device, without unique names, you will be difficult to control the device via your voice with Alexa.



3. Open “Alexa” APP, click “More”

4. Click “Skills and Games”

5. Input “Tata Power EZ HOME” to search skills, click search

6. Click “EZ HOME” and enter

7. Click **ENABLE TO USE**

8. Input your “EZ HOME” APP account and password which you have registered. (Attention: this is not the account and password of Alexa APP). Click **Authorization**

9. Close this window to discover smart devices you can control with Alexa

10. Click **DISCOVER DEVICES**, then looking for devices

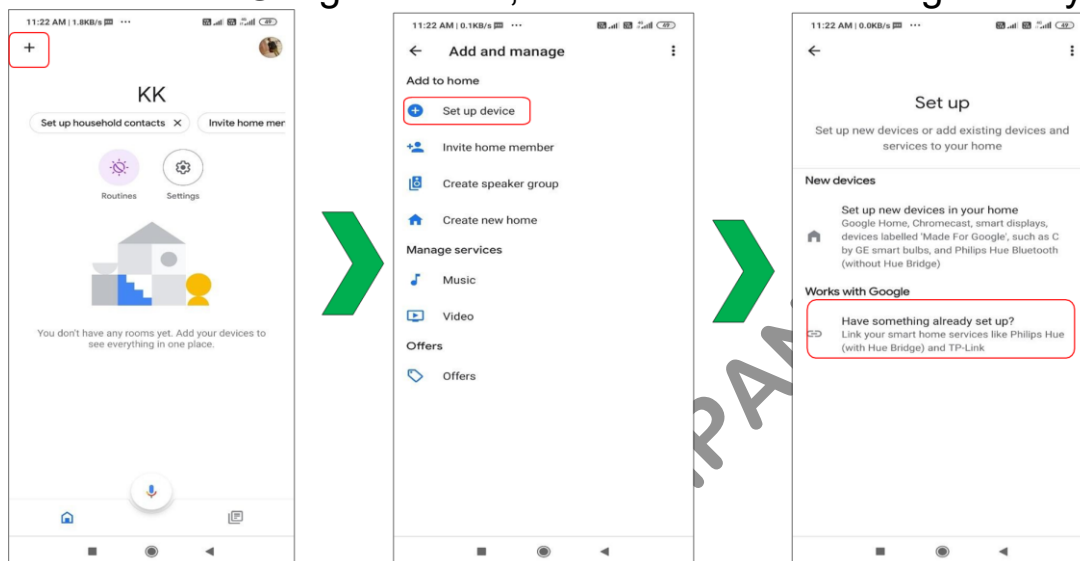
11. If successful, you will find the device list, then you can voice control the smart touch switch with Alexa

12. If failed, please check FAQs to find out reasons, then discover devices again. Click “Add Device”, Alexa will help you discover devices again

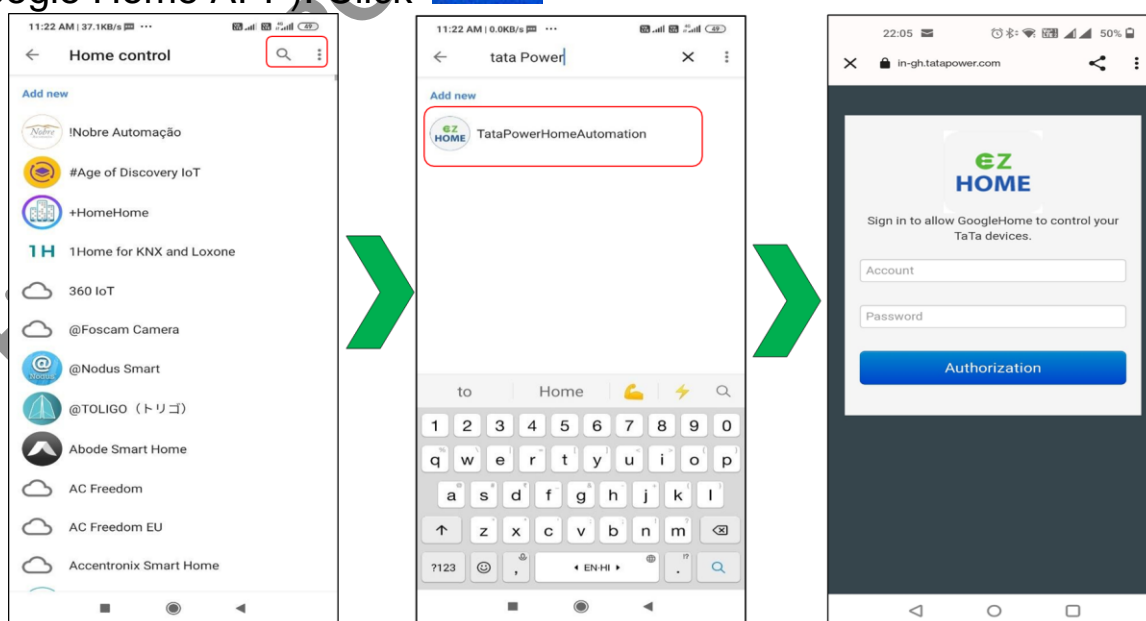
Remark: If you rename the smart switch name in APP, you need to search device again in Alexa APP, then to control the switch via voice commands.

4.8 Set “Google Home” App

1. Once user installs the Google Home APP, the APP will ask you to register & enter your email.
2. In the Home page, Select the “+” symbol
3. Select the “Set up device”
4. In the Works with Google section, select “Have something already set up”.



5. On the Search Tab, search for “TataPowerHomeAutomation”
6. Input your “Tata Power EZ HOME” APP account and password which you have registered. (Attention: this is not the account and password of Google Home APP). Click [Authorization](#)



7. Once the authorization is completed, Google Home will discover smart devices.

Remark: If you rename the smart switch name in APP, you need to search device again in Google Home to control the switch via voice commands.

5. Disclaimer

This specification is a detailed description of series products produced by the company. Please read carefully and fully understand the detailed specification parameters of the product.

All rights reserved by Company, without permission of our company, The company do not allow to totally or partly copy, translate or simplify this specification for any other usage.

We do not provide any guarantees for the product information, parameters, photos or other links in the specification, users bear the risks.

We declare that this specification or other relevant information without any implied warranties of business assurance or business contract assurance.

All information inside is only for operation, product user manual or reference, it can't be regarded as a basis or complement for any other contract.

We have made reasonable efforts to make this document content accurate and up-to-date.

But our company reserves the right to update or revise the content and its related information at any time without additional notice.