

**SMART CONVERTOR 3 GANG 2-WAY SWITCH****ITEM: SW04****ITEM DESCRIPTION: 3GANG 2-WAY 16A SMART RELAY SWITCH, SW04, (INBUILT RF MODULE GWF-KM26)****VERSION: V1.4****DATE: 2024-07-16****1. Product Instruction****1.1 Product Overview**

---

SW04 is a 3 channel 2 way WiFi lighting switch, which should be used in conjunction with exclusive APP, the compact design makes it suitable to be installed in a limited space, such as a wall mount switch box, an electrical control panel, etc. The device can be WiFi connected to an IOT server, allows user to power ON/OFF and monitor power consumption of their lights or home appliances anytime and anywhere with an exclusive APP.

The SW04 smart switch works with Amazon Alexa and the Google Home, the smart switch can be controlled via Alexa/Google Home voice service like ON/OFF control.

**1.2 Reference Picture**

---

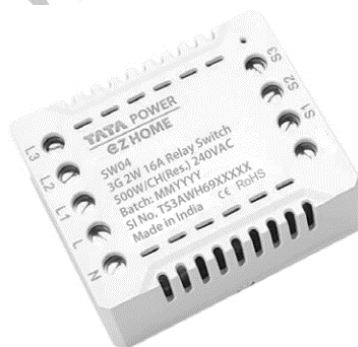


Figure 1.

**1.3 Product Function**

---

- It can be installed in a wall mounted switch box to Open/Close lights or appliances at home.
- The 3-channel outputs can be controlled locally by 3 individual

Mechanical switches independently or can be remotely and separately controlled through an APP via WiFi connection.

- Work with Alexa/Google Home, and use voice commands to control the switches. Also support individual switch voice control.
- Energy consumption monitoring: view the real-time power consumption or review the total electricity usage in a period of time.
- Switch control history view
- Setup multiple control timers, support individual switch timer setting
- Support multiple user control
- Support group control
- Work with 2.4 GHz WiFi

## **1.4 Works with Alexa and the Google Home**

---

The WiFi lighting switch works directly with Amazon Alexa and the Google Home, you can manage your devices through voice control like turn ON/OFF. Assign a name to each WiFi lighting switch and communicate with each switch by name when making a voice command, Users could purchase these intelligent speakers on the market for convenient usage.



Figure 2.

## **2. User Guide**

### **2.1 Prerequisites**

---

- The WiFi switch support local / remote control via 2.4 GHz WiFi wireless technology, the device must be used in the environment where 2.4 GHz WiFi network is available, and the user must know the WiFi network name (SSID) and corresponding password.  
Special Tips: The WiFi network switch connected generally does not need special adjustment, only in a few case, users may need to check working status of WiFi router: Connected devices number, WiFi signal

status or the state of surrounding WiFi network.

- To connect the switch to WiFi router, users need to download and install corresponding APP and complete device pairing via APP.
- There is power limitation for load, please note that the max total output power of switch is not more than 2250W, per channel is no more than 750W.
- If customers need to voice control the product, please configure the Alexa or Google Home speaker according to user guide.

## 2.2 Wiring mode

Note: Before wiring, please power off appliance first, cut off original power line, then wiring WiFi switch by referring to following figure.

The switch can be used to control 1 or 2 or 3 channel ordinary switches as per user necessary, but user must use the device in line of the max power limit.

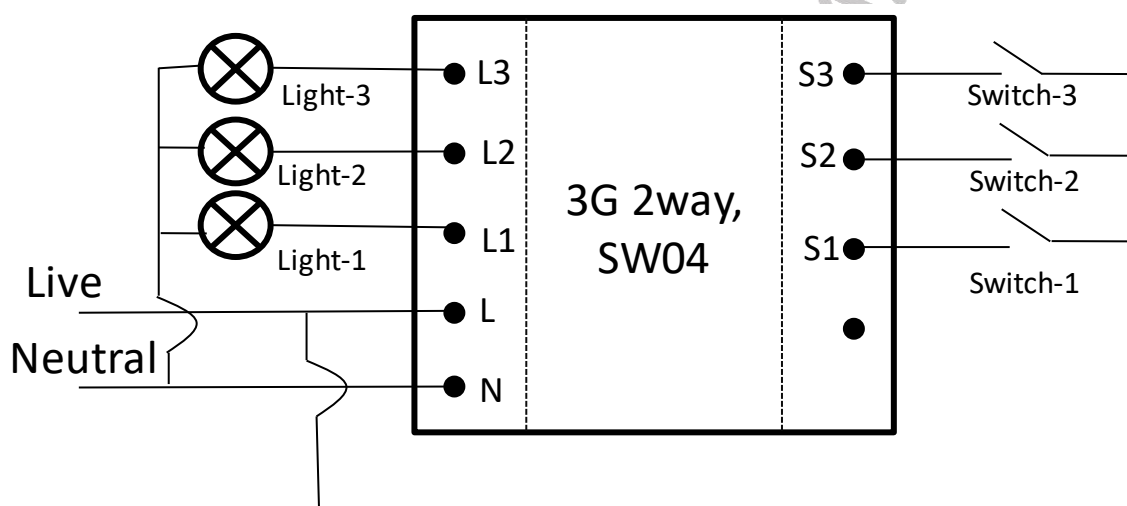


Figure 3.

### Wiring Description:

Special note: Once wiring is completed, please process APP configuration immediately (Add new device). In this process, the reset button would be applied to reset device to make device enter configurable state, so that we need to complete app configuration before locking the wall mounted switch box.

Identity	I/O	Description
L3	output	Channel 3, AC live line output load
L2	output	Channel 2, AC live line output load
L1	output	Channel 1, AC live line output load
L	input	AC live line input phase
N	input	AC neutral line input
S1	input	Terminal for connecting conventional switch L1

S2	input	Terminal for connecting conventional switch L2
S3	input	Terminal for connecting conventional switch L3

## 2.3 Parameters

Parameters	Details
ON/OFF control	3 Channel 2-Way
Application	Lights or Home appliance
Wireless connection	WiFi 2.4 GHz
Rated voltage	240 VAC
Max total output power	2250W @ 240V AC
Rated Power/ Channel	750W @ 240V AC
WiFi range	30 meters indoor, 45 meters outdoors
APP support	Support Android 6.0 and iOS 11.0 or above
Dimension	58.5*48*22mm
Operating Temperature	-10°C~ +50°C
Operating Humidity	20%~85%(No condensing)

## 3. Configuration Preparation

### 3.1 APP Download

The APP is compatible with Android 6.0 and iOS 11.0 or above system. iOS users could search the APP in App Store. Android users could search the APP in Google Play.

APP English name: "TATA Power EZ Home"



Tata Power EZ HOME

### 3.2 Factory Reset (enter configurable status)

"Factory Reset" is an important step in APP configuration (Add new device), which make device enter configurable state.

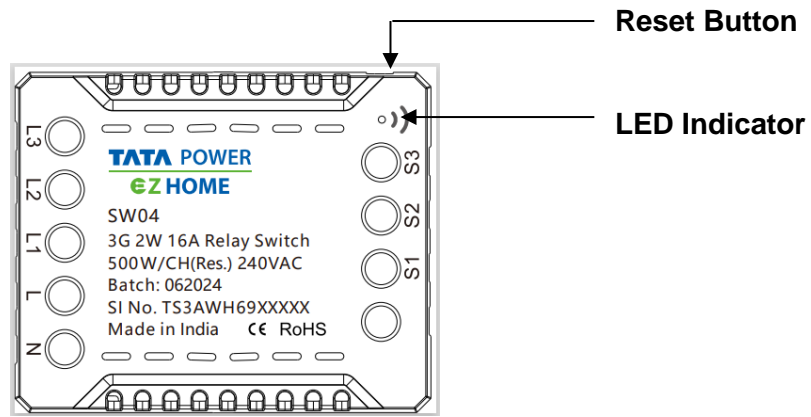


Figure 4.

Two ways to reset:

The first way: **For the first APP configuration, we suggest to reset device by this way:** long press the reset button for 5 seconds until the LED indicator flashes quickly.

The second way: when the device is installed and locked inside an amounted switch box, we need to reset the device via Mechanical switch input connected to S1 terminal of the device.

Switch “OFF→ ON→ OFF→ ON→ OFF→ ON→ OFF→ ON→ OFF→ ON” switch, that is, keep pressing the ordinary switch for ten times rapidly and continuously in 5 seconds (complete the 5 OFF-ON cycle). If the device reset is successful, the lamp connected with the ordinary switch will flash twice then keep on.

### 3.3 WiFi Work Mode

Once the WiFi connection is successful, the lighting switch will work in two work modes.

Work Mode	WiFi Control	Direct Control
APP local control	Yes	Yes
APP remote control	Yes	N/A
Alexa/Google Home voice platform	Yes	N/A

\*After connection successfully, users could set work mode in APP

\*Now device supports Alexa/Google Home voice platform, more voice service is supporting.

## 4. WiFi Configuration (Add new device)

### 4.1 Easy mode add device

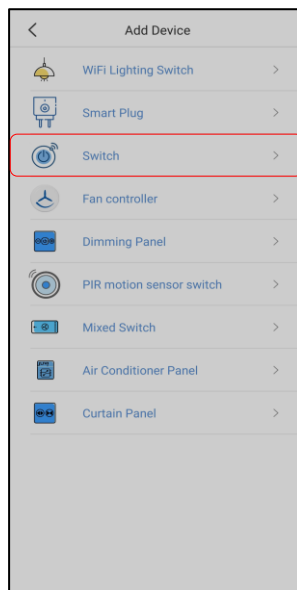
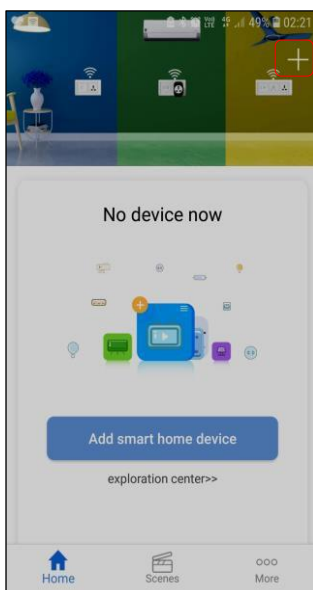
WiFi networking configuration for SW04 smart converter switch is convenient and rapid, mobile should be connected to the designated router quickly, the whole process is generally less than 15 seconds.

Make sure the wiring of WiFi smart switch is completed and it is powered on. (The smart switch only supports 2.4GHz WiFi router)

#### Configuration process:

Step 1. Download Tata Power EZ HOME from App store/Google Play or scan QR code to download and install APP. Register yourself with your email and sign in. Connect mobile phone to 2.4G WiFi.

Step2. Open “EZ HOME” APP, register and login, click “+” to add Smart Switch. Select “Switch”, enter device secondary list, select “WiFi Smart Switch”.



Step3. Enter networking interface, WiFi will show the WiFi your mobile phone connected, enter WiFi password, click “Configure signal”. (The WiFi Smart Switch only supports 2.4GHz WiFi router)

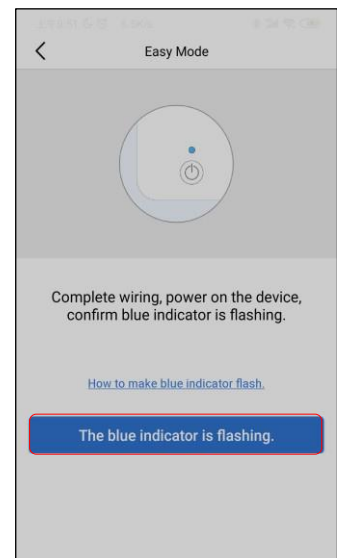




Step4. Check device status, after wiring and device is powered on, please check if the led indicator flashes quickly. If yes, please confirm and enter “Configure Signal” directly. If not, please reset device.

**Operation: Long press reset button for 5 seconds until the LED indicator flashes quickly.**

Confirm “Blue indicator is flashing” and start connection.



Two ways to reset WiFi lighting switch:

**The first way: for the first APP configuration, reset device via device reset button:** long press the reset button for 5 seconds until the led indicator flashes quickly.

The second way: when the device is installed and locked inside an amounted switch box, we need to reset the device via Mechanical switch input connected to S1 terminal of the device.

Switch “OFF→ ON→ OFF→ ON→ OFF→ ON→ OFF→ ON→ OFF→ ON” switch, that is, keep pressing the ordinary switch for ten times rapidly and continuously in 5 seconds (complete the 5 Off-On Cycle). If the device reset is successful, the lamp connected with the ordinary switch will slow flash twice then keep on.

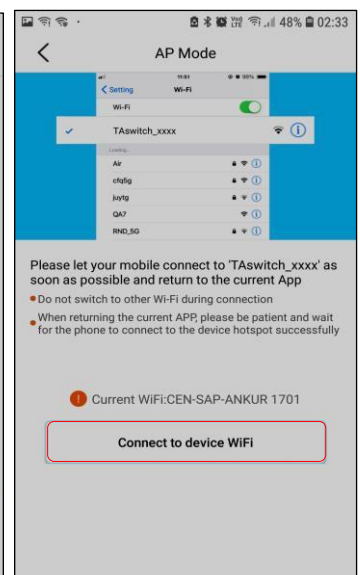
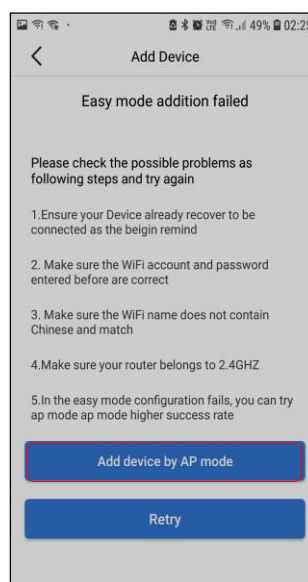
Confirm and start connection.

If the configuration in easy mode is failed, you will find following page, Click “Add device by AP mode” button to add device as following steps.

## 4.2 AP mode add device

Step1. If the configuration in Easy mode is failed, you will find following page, Click “Add device by AP Mode” button to add device.

Step 2. According to page prompt, go to WLAN setting in your smart phone and select the “TAswitch\_XXXX” for your WIFI, no need to input password.



Step 3. Once you select the "TASwitch\_XXXX", go back to app, click ▼ to select WiFi SSID and input password, click "Next Step" to start connection. Once devices configured successfully, you will find it in device list.

**Remark:**

1. If there is no WiFi around smart switch, you can click ▼ select "direct control", and the smart switch will work in direct control work mode, in this mode, APP can only local control for the smart switch.
2. if the device needs to be voice controlled by Alexa/the Google Home or remote controlled by APP. The device must be added in WiFi control work mode.

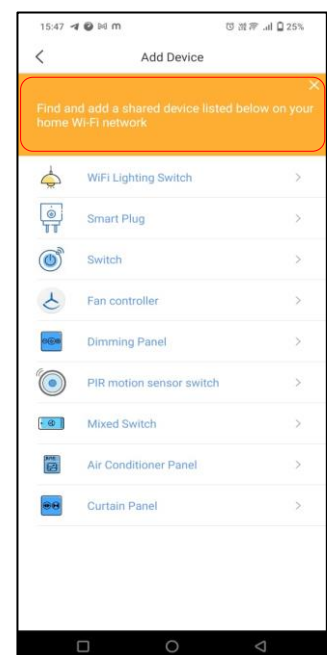


### 4.3 Shortcut Configuration

If the device has been configured successfully, users who want to control the switch just connect the mobile to WiFi which the switch connected, then Open the APP, click orange prompt message to add device, after configuration, users can local control and remote control switch.

**Remark:**

1. Only administrator can turn on sharing mode, administrator is the first user account who connected smart light.
2. Sharing mode is enable for default, if the administrator close the sharing mode in setting, the users can't find device via this configuration.

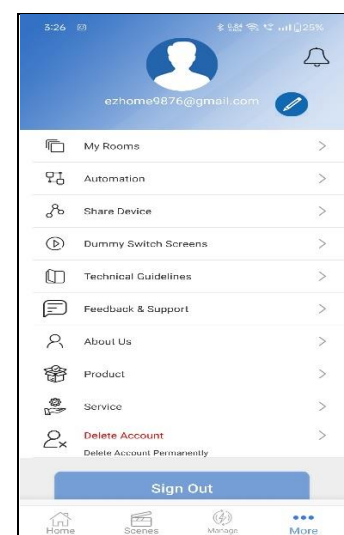


### 4.4 Share Configuration

If the device has been configured in STA mode, administrator can share the device to users to help their configure device, the users who configure switch just need to keep mobile in WiFi/4G network.

**Remark:**

1. Only administrator could share device with other account
2. The users who is shared with smart light will





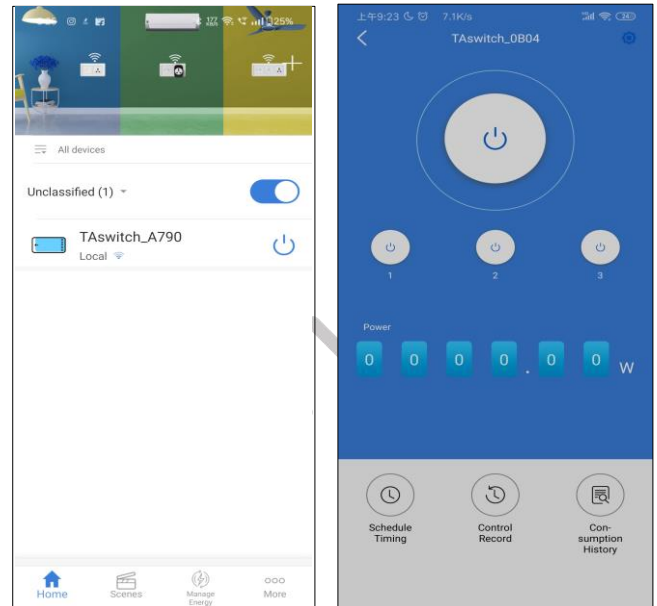
receive prompt message in APP but do not have permission to share others again.

3. The user who is shared with smart light could local or remote control the smart light.

#### 4.5 Control Interface

After connection successful, the device appears in the device list, click device to enter control page, the device can be controlled by APP with following functions.

- Timing function
- Control history view
- Power monitor
- Support local and remote control




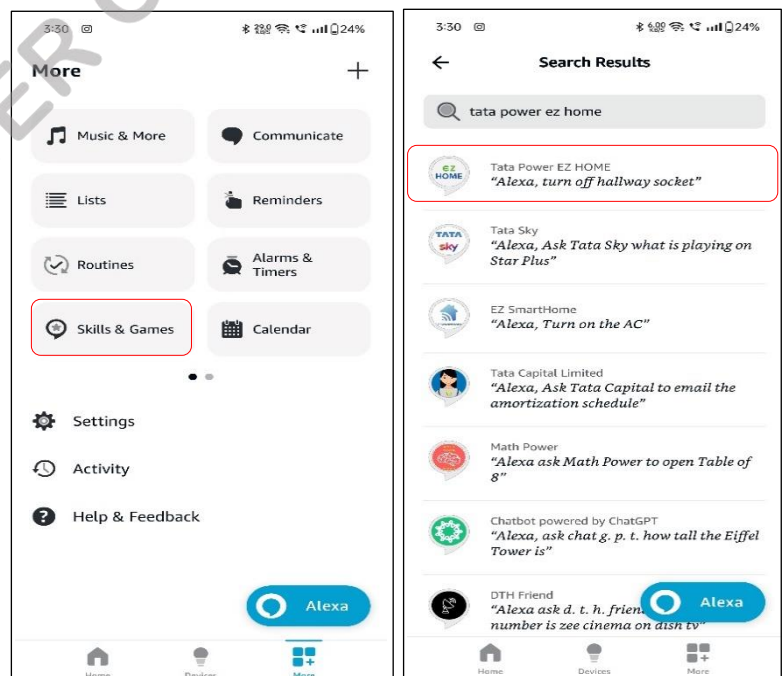
#### 4.6 Set "Alexa" APP



*Remark: If you want to voice control your device with the Google Home, the device must be added in WiFi control work mode.*

1. Once install the APP, the APP will ask you to register, select language and enter your email, input verification code and create a password. If you could not see the verification code well, you can click the code button to refresh and input again.

2. Once APP configuration is successful, long press corresponding device in APP device list to set a suitable name such as "COCO" for your device, without unique names, you will be difficult to control the device via your voice with Alexa.

3. Open "Alexa" APP, click .



4. Click "Skills and Games".  
5. Input "EZ HOME" to search skills, click search   
6. Click "EZ  HOME" and enter.

7. Click 

8. Input your "EZ HOME" APP account and password which you have registered. (Attention: this is not the account and password of Alexa APP). Click 

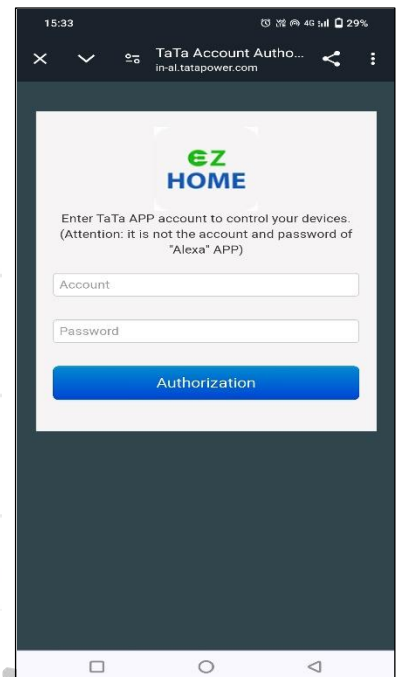
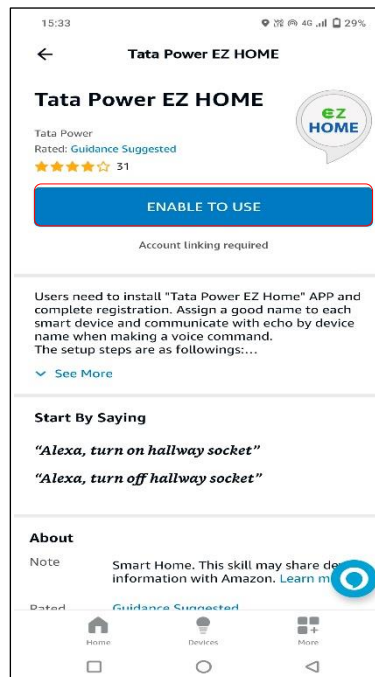
9. Close this window to discover smart devices you can control with Alexa

10. Click , then looking for devices.

11. If successful, you will find the device list,  
Then you can voice control the SW04 smart switch with Alexa

12. If failed, please check FAQs to find out reasons, then discover devices again. Click "Add Device", Alexa will help you discover devices again.

*Remark: If you rename the smart switch name in APP, you need to search device again in Alexa APP and Google Home, then to control the switch via voice commands.*



## 5. Disclaimer

This specification is a detailed description of series products produced by the company, please read carefully and fully understand the detailed specification parameters of the product.

All rights reserved by company, without permission of our company, the company do not allow to totally or partly copy, translate or simplify this specification for any other usage.

We do not provide any guarantees for the product information, parameters, photos or other links in the specification, users bear the risks.

We declare that this specification or other relevant information without any implied warranties of business assurance or business contract assurance. All information inside is only for operation, product user manual or reference, it can't be regarded as a basis or complement for any other contract.

We have made reasonable efforts to make this document content accurate and up-to-date. but our company reserves the right to update or revise the content and its related information at any time without additional notice.