

**1GANG 2-WAY SMART POWER RELAY SWITCH****ITEM: SW07****ITEM DESCRIPTION: 1Gang 2-Way 30A Smart Relay Switch, SW07, (Inbuilt UART Wi-Fi Module GWF - KM26)****VERSION: V1.3****DATE: 2024-07-27****1. Product Instruction****1.1 Product Overview**

SW07 is a 1 channel 2-way Power switch, which should be used in conjunction with exclusive Tata Power EZ Home APP, the compact design makes it suitable to be installed in a limited space, such as a wall mount switch box, an electrical control panel, etc. The device can be WiFi connected to an IOT server, allows user to power on or off and monitor power consumption of their AC, Geyser or electrical appliances anytime and anywhere with APP.

The SW07 smart switch works with Amazon Alexa and the Google Home, the smart switch can be controlled via Alexa/the Google Home voice service like ON/OFF control.

**1.2 Reference Picture**

SW07 Converter appearance:



Figure 1.

**1.3 Product Function**

- It can be installed in a wall mounted switch box to operate AC's, Geysers or any power intensive electrical appliances.

- The 1 channel output can be controlled locally by conventional switch independently or can be remotely controlled from anywhere through an App via Wi-Fi connection (Local and Remote).
- Supports voice control with Alexa & Google Home.
- Set schedule: Turn on/off your appliances based on specific time you set.
- Auto shutdown timer and delay off timer switch off your appliances after set time period, Timer extends the total Power ON period accordingly in case of power failure. Even it works without Wi-Fi.
- Energy consumption monitoring: view the real-time power consumption or review the total electricity usage in a period of time.
- Multiple users control
- Overload feature
- Power On Switch status
- Control history view
- Support STA and AP work mode
- Support 2.4GHz Wi-Fi

#### **1.4 Works with Alexa and the Google Home**

---

The Smart power relay switch works directly with Amazon Alexa and the Google Home, you can manage your devices through voice control like turn ON/OFF. Assign a name to Smart Power Switch and communicate with switch by name when making a voice command, Users could purchase these intelligent speakers on the market for convenient usage.



Amazon Echo Google Home

Figure 2.

## **2. User Guide**

### **2.1 Pre requisites**

---

- The WiFi switch support local/remote control via 2.4GHz WiFi wireless technology, the device must be used in the environment where 2.4GHz WiFi network is available, and the user must know the WiFi network

name (SSID) and corresponding password to connect the switch with App.

Special Tips: the WiFi network switch connected generally does not need special adjustment, only in a few case, users may need to check working status of WiFi router: Connected devices number, WiFi signal status or the state of surrounding WiFi network.

- To connect the switch to WiFi router, users need to download and install Tata Power EZ Home APP and complete device paring via APP.
- Maximum output power limit is 3000W for pure resistive load and 2000W for any inductive load.
- If customers need to voice control the product, please configure the Alexa or Google Home speaker according to user guide.

## 2.2 Wiring Instruction

Note: Before wiring, please power off appliance first, cut off original power line, then wiring WiFi switch by referring to following figure.

The switch can be used to control 1 power intensive electrical point as per user requirements, but user must use the device in line of the max power limit.

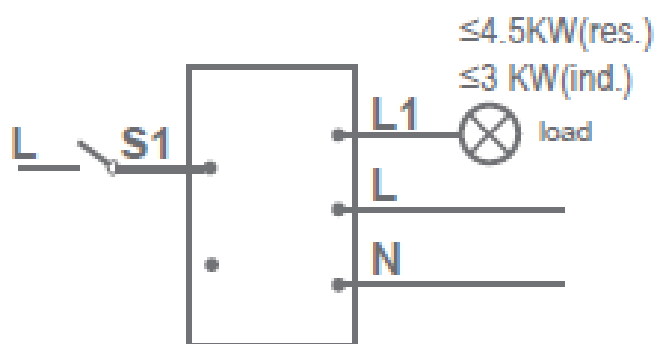


Figure 3

Wiring Description:

Special note: Once wiring is completed, please process APP configuration immediately (Add new device). In this process, the reset button would be applied to reset device to make device enter configurable state, so that we need to complete app configuration before locking the wall mounted switchbox.

Identity	I/O	Description
L1	Output	Channel 1 terminal for connecting load
L	Input	Terminal for AC live line input phase
N	Input	Terminal for AC neutral line input
S1	Input	Terminal for connecting conventional switch

## 2.3 Parameters

Parameters	Details
ON/OFF control	1 Electrical Point in 2-Way mode
Application	AC, Geyser or other Power Appliance
Wireless connection	WiFi 2.4 GHz
Rated voltage	240V AC
Maximum output power	3000W for Resistive, 2000W for inductive
WiFi range	30 meters indoor, 45 meters outdoors
APP support	Support Android 6.0 and iOS 8.0 or above
Dimension	59*47*22.5mm
Operating Temperature	-10°C ~ +50°C
Operating Humidity	20%~85%(No condensing)

## 3. Configuration Preparation

### 3.1 APP Download

The APP is compatible with Android 4.1 and iOS 8.0 or above system. iOS users could search the APP in App Store. Android users could search the APP in Google Play.

APP English name: "TATA Power EZ Home"



Tata Power EZ HOME

(QR code TATA Power EZ Home for both Play Store & App Store)

### 3.2 Factory Reset (enter Configurable status)

Factory Reset by "Reset" button is an important step in APP configuration (Add new device), which makes the device enter configurable state.

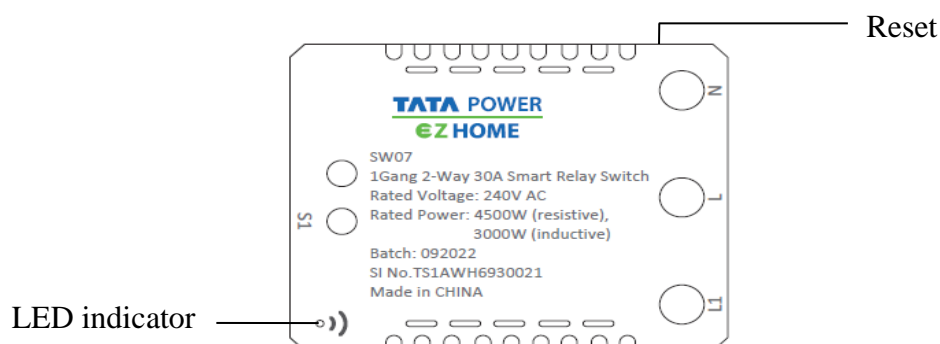


Figure 4

Two ways to reset:

The first way: **for APP configuration, we suggest to reset device by this way:** long press the reset button for 5 seconds until the LED indicator flashes quickly.

The second way: when the device is installed and locked inside an amount switch box, we need to reset the device via Conventional switch connected to S1 terminal of the device.

Switch “Off→ On→ Off→ On→ Off→ On→ Off→ On→ Off→ On”, that is, keep pressing the conventional switch for ten times rapidly and continuously within 5 seconds (complete the 5 Off-ON cycle). The Wi-Fi Blue LED indicator will start blinking fast.

### 3.3 Wi-Fi Work Mode

Once the WiFi connection is successful, the device will work in two work modes.

Work Mode	WiFi Control	Direct Control
APP local control	Yes	Yes
APP remote control	Yes	N/A
Alexa/ Google Home	Yes	N/A

\*After connection successfully, users could set work mode in APP

## 4. Wi-Fi Configuration (Add new Device)

### 4.1 Easy Mode add device

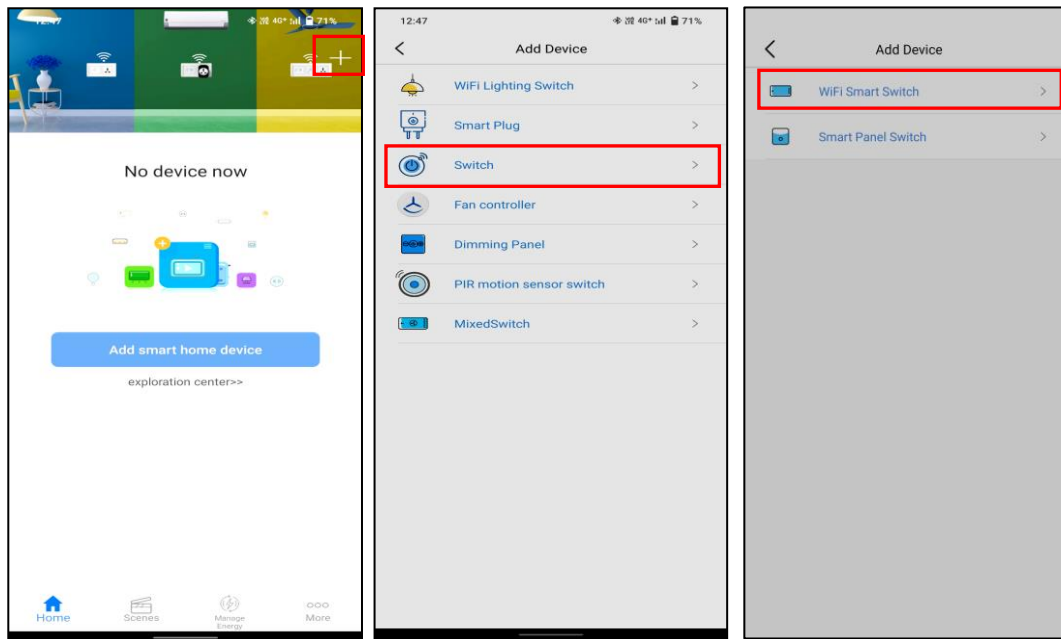
Wi-Fi networking configuration for 1 channel 2-Way 30A Smart Relay Switch, SW07 is convenient and rapid. Mobile could be connected to the designated router quickly, the whole process is generally less than 15 seconds.

Make sure the wiring of WiFi smart switch is completed and is powered on. (The Smart Switch only supports 2.4GHz Wi-Fi router)

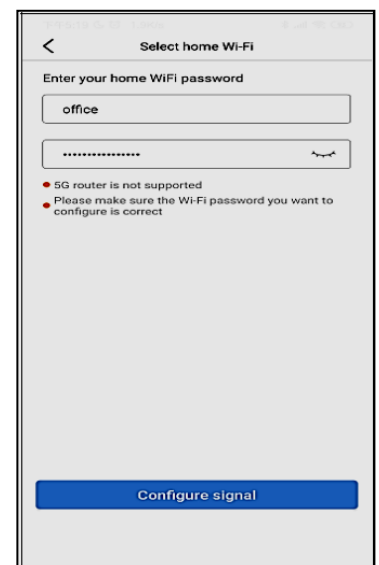
#### Configuration process:

Step 1. Download Tata Power EZ HOME from App store/Google Play or scan QR code to download and install APP. Register yourself with your Mobile No. or email and sign in. Connect mobile phone to 2.4GHz WiFi.

Step 2. Open “EZ HOME” APP, register and login, click “+” to add Mixed Switch. Select “Switch”, enter device secondary list, select “WiFi Smart Switch”.



Step 3. Enter networking interface, App will show the WiFi to which your mobile phone connected, enter WiFi password, click “Configure signal”. (The WiFi Smart Switch only supports 2.4GHz WiFi router).

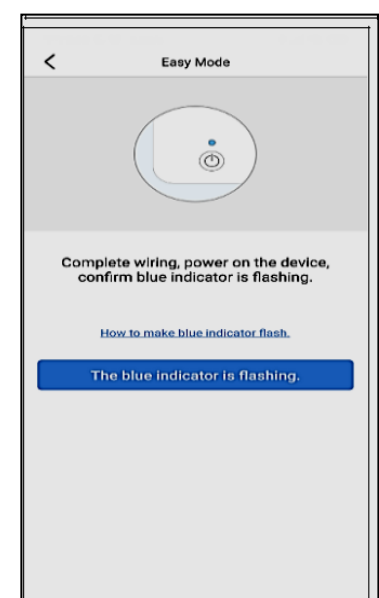


Step 4. Check device status, after wiring and device is powered on, please check if the led indicator flashes quickly. If yes, please confirm and enter “Configure Signal” directly. If not, please reset device.

**Operation: long press reset button for 5 seconds until the LED indicator flashes quickly.**

Confirm “Blue indicator is flashing” and start connection.

Two ways to reset WiFi switch:



**The first way: for APP configuration, reset device via device reset button:** long press the reset button for 5 seconds until the led indicator flashes quickly.

The second way: when the device is installed and locked inside an amount switch box, we need to reset the device via conventional switch input connected to S1 terminal of the device.

Switch “Off→ On→ Off→ On→ Off→ On→ Off→ On→ Off→ On”, that is, keep pressing the conventional switch for ten times rapidly and continuously within 5 seconds (complete the 5 Off-ON cycle). The Wi-Fi Blue LED indicator will start blinking fast.

Confirm and start connection.

Step 5. Configuration is in progress”.



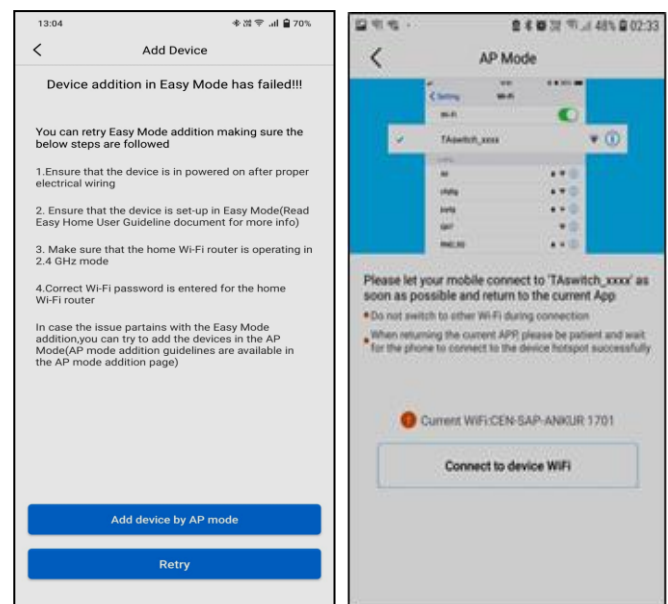
If the configuration in easy mode is failed, you will find following page, Click “Add device by AP mode” button to add device as following steps.

## 4.2 Add device in AP Mode

**Remark: This configuration is a supplementary configuration way, if you failed configuration in Easy mode, please try AP mode to add device.**

Step 1. If the configuration in Easy mode is failed, you will find following page, Click “Add device by AP Mode” button to add device.

Step 2. According to page prompt, go to WLAN setting in your smart phone and select “TAswitch\_XXXX” for your





WiFi, no need to input password.

Step 3. Once you select the “TASwitch\_XXXX”, go back to app, click ▾ to select your WiFi SSID and password, click “Next Step” to start connection. Once devices configured successfully, you will find it in device list.

**Remark:**

1. If there is no WiFi around smart switch, you can click ▾ select "direct control", and the smart switch will work in direct control work mode, in this mode, APP can only local control for the smart switch.



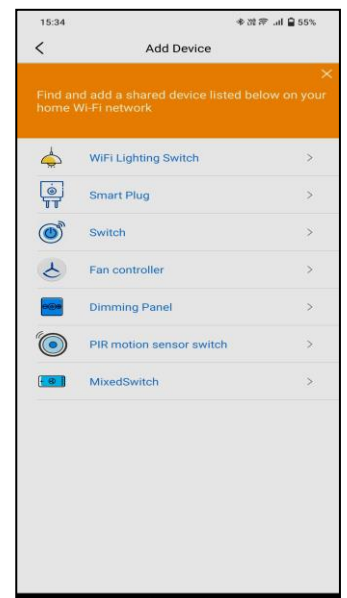
### 4.3 Shortcut Configuration

If the device has been configured in STA mode, configured device will be visible to other users who wants to add the same device in the App. The users who wants to configure the switch, just need to keep mobile in same Wi-Fi/4G network to which switch is also connected.

**Remark:**

1. Only administrator can turn on sharing mode, administrator is the first user account who connected smart switch.

2. Sharing mode is enabled for default, if the administrator close the sharing mode in setting, the users can't find device via this configuration.



### 4.4 Share Configuration

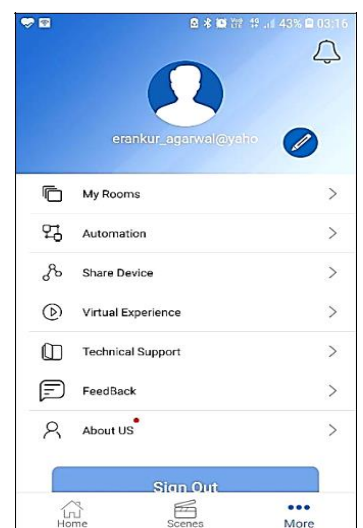
If the device has been configured in STA mode, administrator can share the device to users to help their configure device, the users who configure switch just need to keep mobile in Wi-Fi/4G network.

**Remark:**

1. Only administrator could share device with other account.

2. The users who is shared with Smart switch will receive prompt message in APP but do not have permission to share others again.

3. The user who is shared with smart switch could local



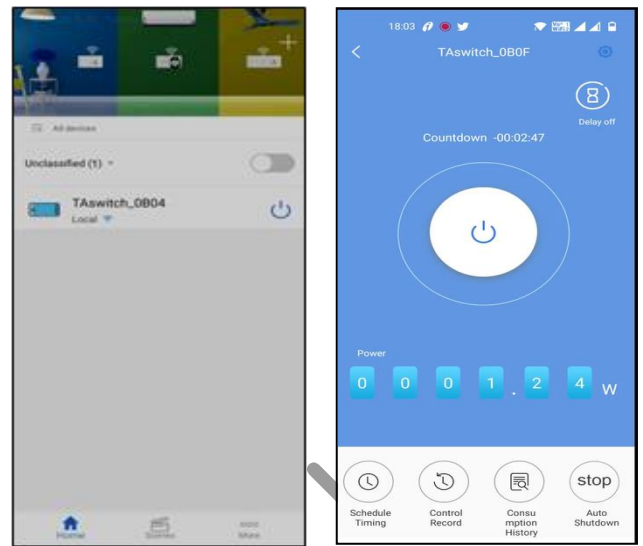


or remote control the smart switch.

#### 4.5 Control Interface

After connection successful, the device appears in the device list, click device to enter control page the device can be controlled by APP with following functions.

- Schedule Timing function
- Control Record view
- Real Time Power monitor
- Support local and remote control
- Auto shutdown timer & Delay Off timer

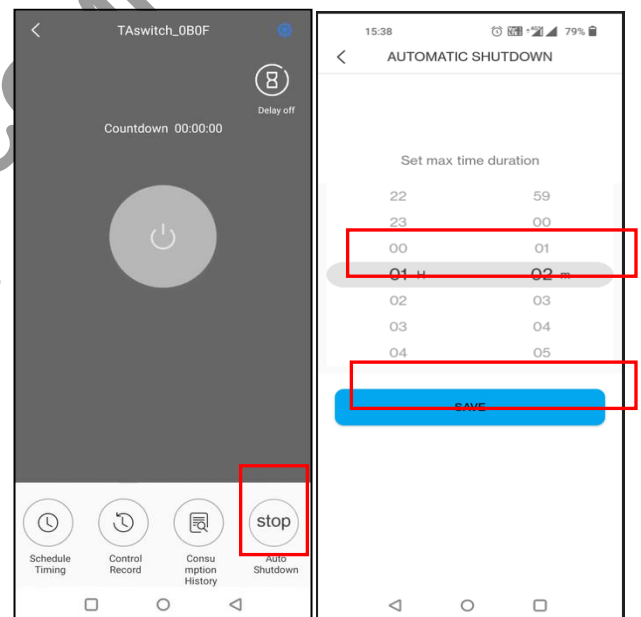


#### 4.6 Auto Shutdown and Delay Off timer

**Auto Shutdown Timer-** User needs to set the time duration in the App for making the switch OFF after select duration once the connected appliance is powered ON via manually or via App. After the set time period, the timer switches Off the connected load automatically. In case of power failure, the Timer extends the total Power ON period for similar period to compensate the time lost during the Power failure. This timer works even without Wi-Fi.

Steps to set timer:

1. Click on “Auto Shutdown”
2. Set timer duration & click on “SAVE”

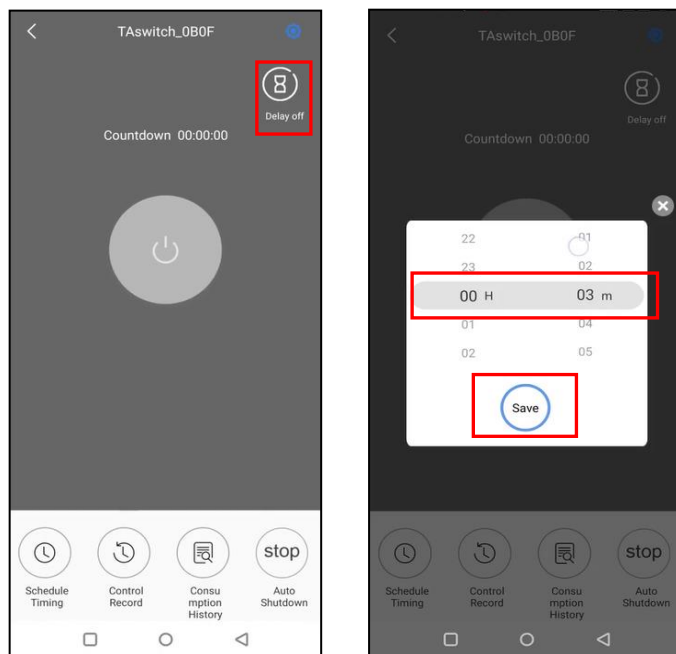


**Delay Off timer-** User needs to set the time duration in the App for making the switch OFF after select duration. Once this timer is set, the connected load gets switched On immediately, the load remains in Power ON condition until the set time period is elapsed. In case of power failure, the Timer extends the total Power ON period for similar period to compensate the time


lost during the Power failure. This timer works even without Wi-Fi.

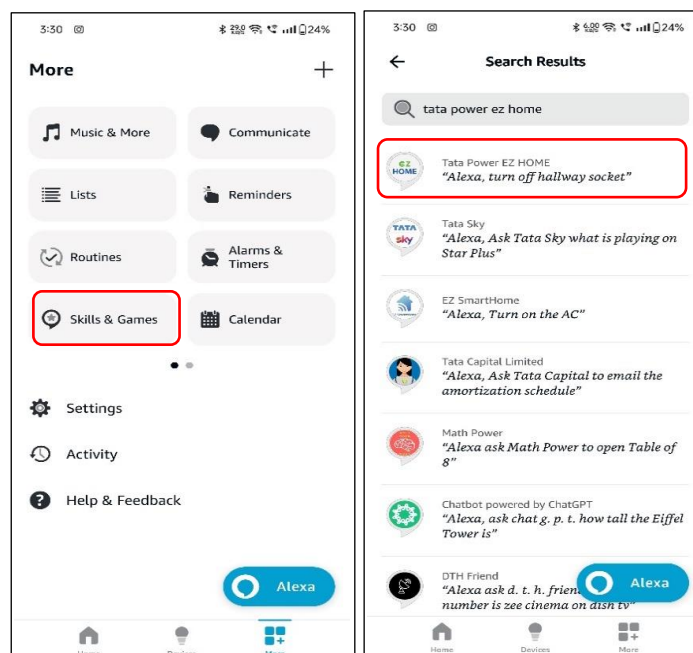
Steps to set timer:





1. Click on “Delay Off”.
2. Set timer duration & click on “SAVE”



#### 4.7 Set “Alexa” App

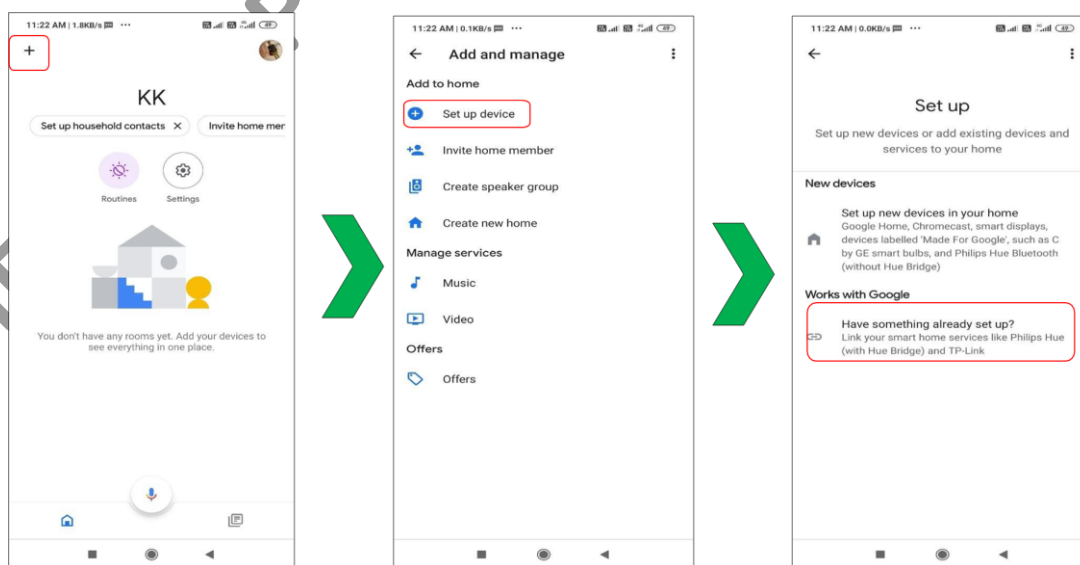
1. Once user installs the Alexa APP, the APP will ask you to register, select language and enter your email, input verification code and create a password. If you could not see the verification code well, you can click the code button to refresh and input again.
2. Once APP configuration is successful, long press corresponding device in APP device list to set a suitable name such as “COCO” for your device, without unique names, you will be difficult to control the device via your voice with Alexa.
3. Open “Alexa” APP, click “More” 
4. Click” Skills and Games”



5. Input "Tata Power EZ HOME" to search skills, click search
  6. Click "EZ HOME  " and enter
  7. Click 
  8. Input your "EZ HOME" APP account and password which you have registered. (Attention: this is not the account and password of Alexa APP). Click 
  9. Close this window to discover smart devices you can control with Alexa
  10. Click , then looking for devices
  11. If successful, you will find the device list, then you can voice control the SW04 smart switch with Alexa
  12. If failed, please check FAQs to find out reasons, then discover devices again. Click "Add Device", Alexa will help you discover devices again
- Remark: If you rename the smart switch name in APP, you need to search device again in Alexa APP, then to control the switch via voice commands.*

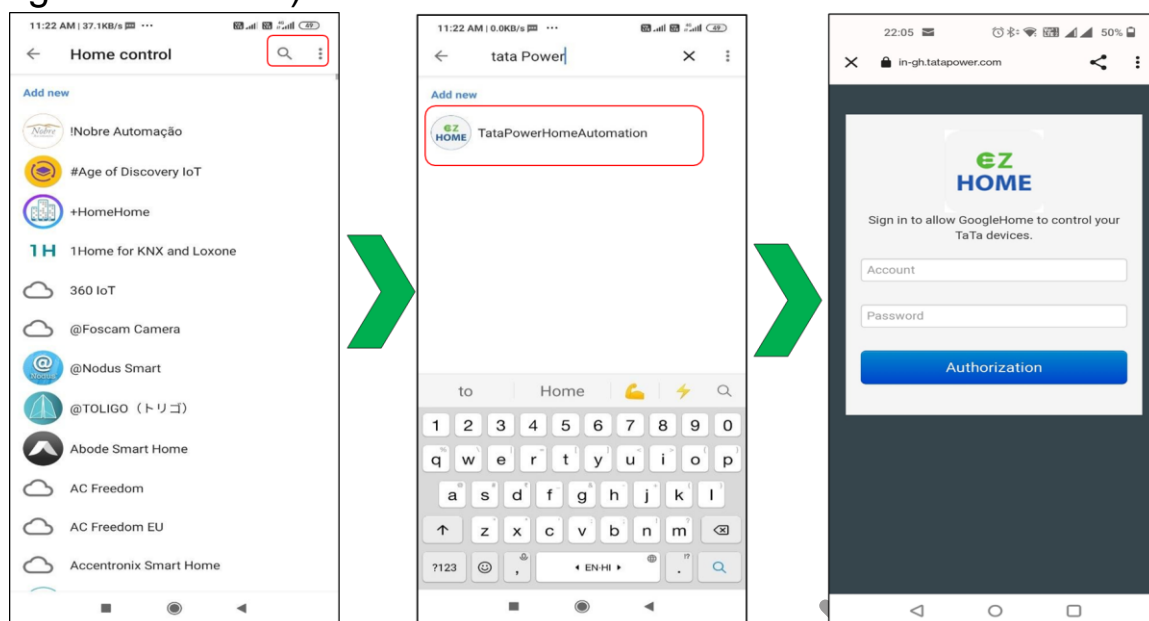
#### 4.8 Set "Google Home" App

1. Once user installs the Google Home APP, the APP will ask you to register & enter your email.
2. In the Home page, Select the "+" symbol
3. Select the "Set up device"
4. In the Works with Google section, select "Have something already set up".



5. On the Search Tab, search for "TataPowerHomeAutomation"
6. Input your "Tata Power EZ HOME" APP account and password which

you have registered. (Attention: this is not the account and password of Google Home APP). Click [Authorization](#)



7. Once the authorization is completed, Google Home will discover smart devices.

*Remark: If you rename the smart switch name in APP, you need to search device again in Google Home to control the switch via voice commands.*

## 5. Disclaimer

This specification is a detailed description of series products produced by the company, please read carefully and fully understand the detailed specification parameters of the product.

All rights reserved by company, without permission of our company, the company do not allow to totally or partly copy, translate or simplify this specification for any other usage.

We do not provide any guarantees for the product information, parameters, photos or other links in the specification, users bear the risks.

We declare that this specification or other relevant information without any implied warranties of business assurance or business contract assurance. All information inside is only for operation, product user manual or reference, it can't be regarded as a basis or complement for any other contract.

We have made reasonable efforts to make this document content accurate and up-to-date.

but our company reserves the right to update or revise the content and its related information at any time without additional notice.